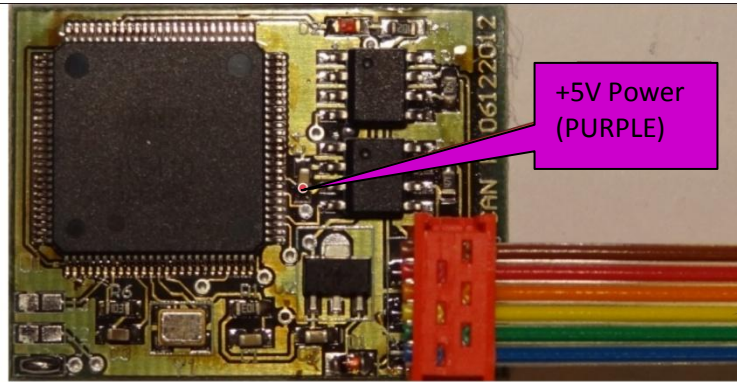
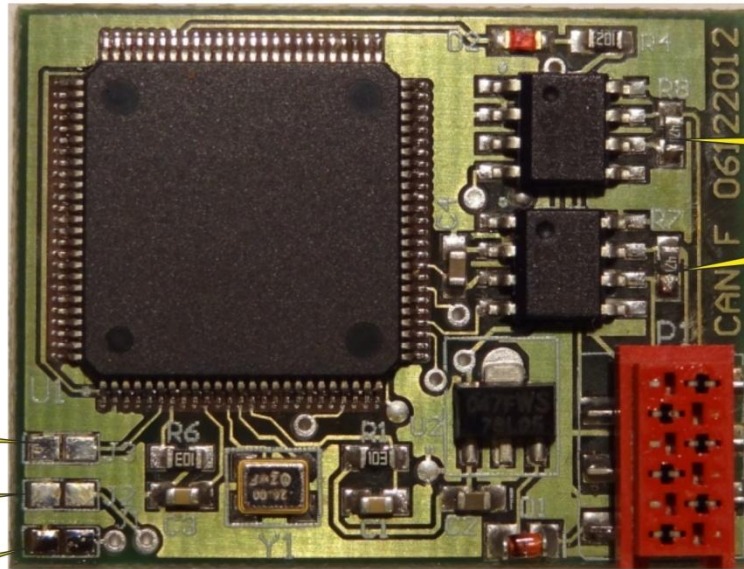


REVTRONIC

ULTIMATE PRO KEY (Green Board V3)

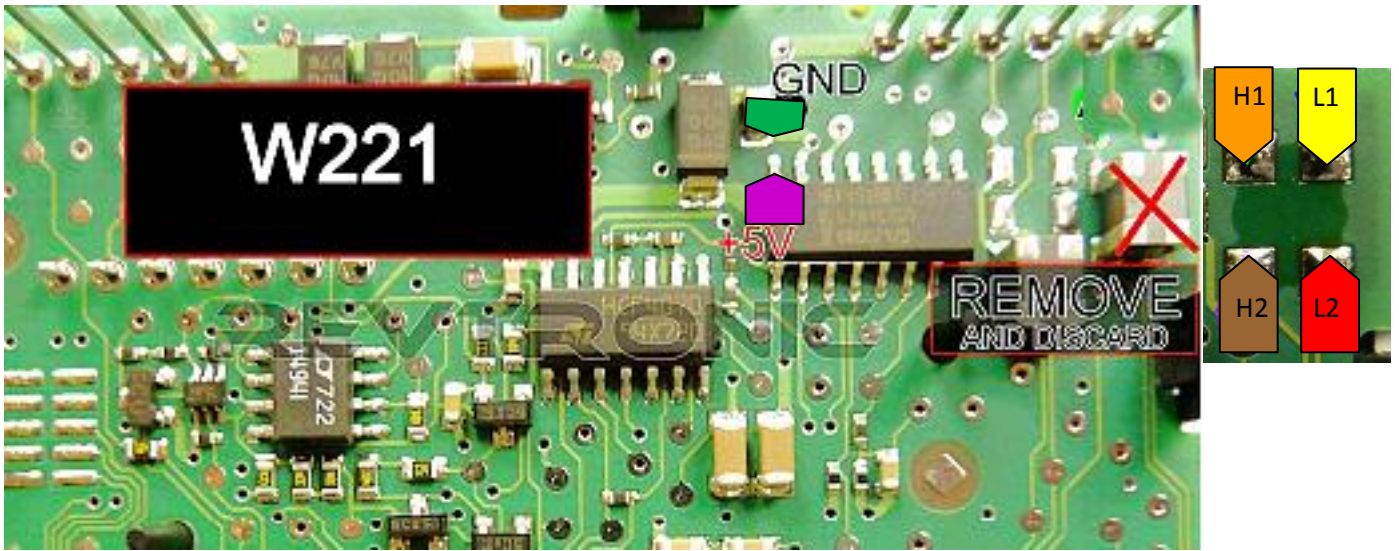


CAN H 2	BROWN
CAN L 2	RED
CAN H 1	ORANGE
CAN L 1	YELLOW
GND	GREEN
+12V	BLUE



MODE	J1	J2	J3	R7	R8
W204	-	+	-	+	+
W212	-	+	-	+	+
W221	-	+	-	+	+
W164	-	-	+	-	-
BMW F	+	+	-	+	+
RENAULT	-	-	-	+	+
TEST	+	-	-	+	+

Mercedes S Class W221 Version 1 – JUMPER 2 ON

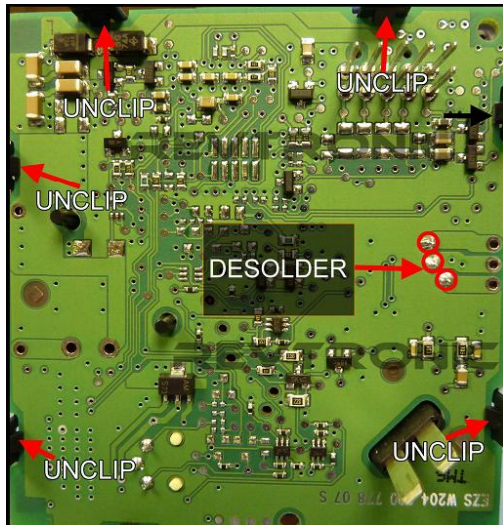


Mercedes S Class Version 2 – JUMPER 2 ON



Mercedes C Class W204 and E Class W212 (Black EZS) – JUMPER 2 ON

Desolder the 3 points, then gently unclip the points as shown below.



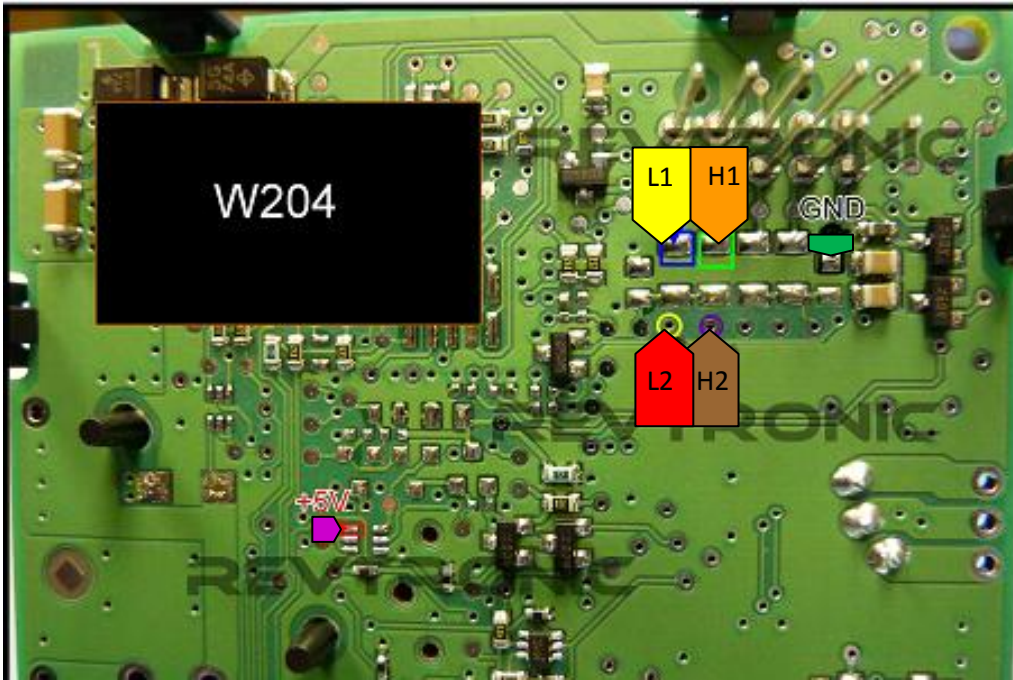
Remove the PCB and locate the brown component. Remove this component and reassemble the board.



Mind the switch shown above.

Be careful when putting back the PCB.

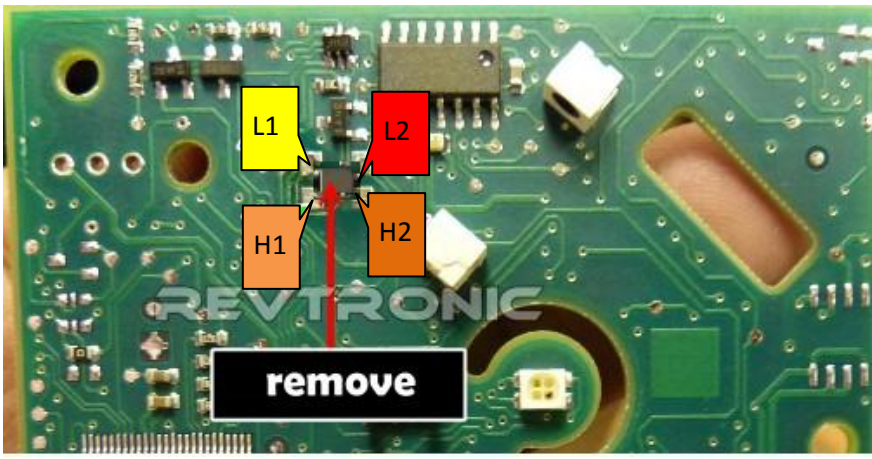
Also Watch solder points C + D when soldering.



Mercedes E Class, W212 – (Grey Back EZS) – JUMPER 2 ON

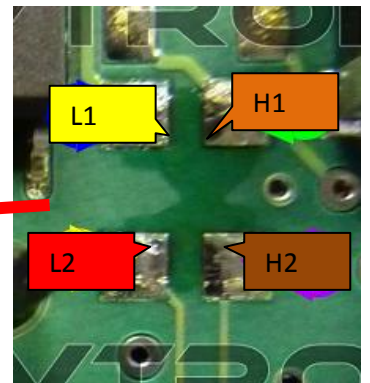
Gently unclip to access the other side of the board. Locate brown component and remove.



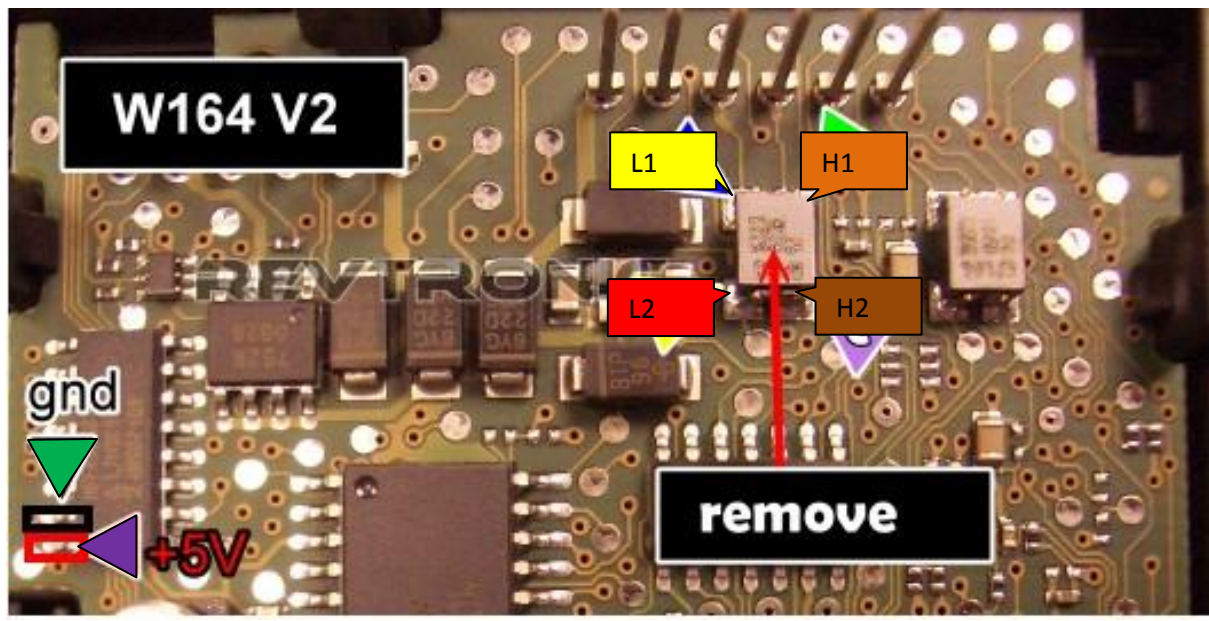


Option 2 – Fit Inside EZS – JUMPER 3 ON , ALSO REMOVE R7 AND R8

Mercedes ML W164, R Class W251, GL W164 



Mercedes W164 -Version 2 - JUMPER 3 ON , ALSO REMOVE R7 AND R8

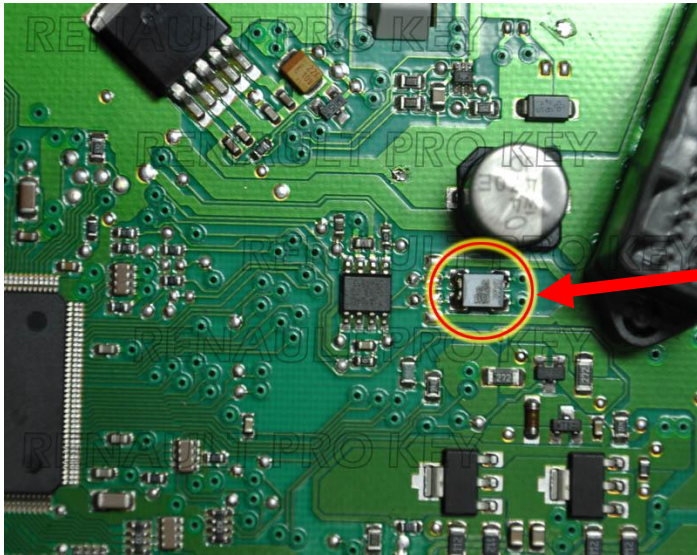


Option 5 – Fit Inside Dash – ALL JUMPERS OFF

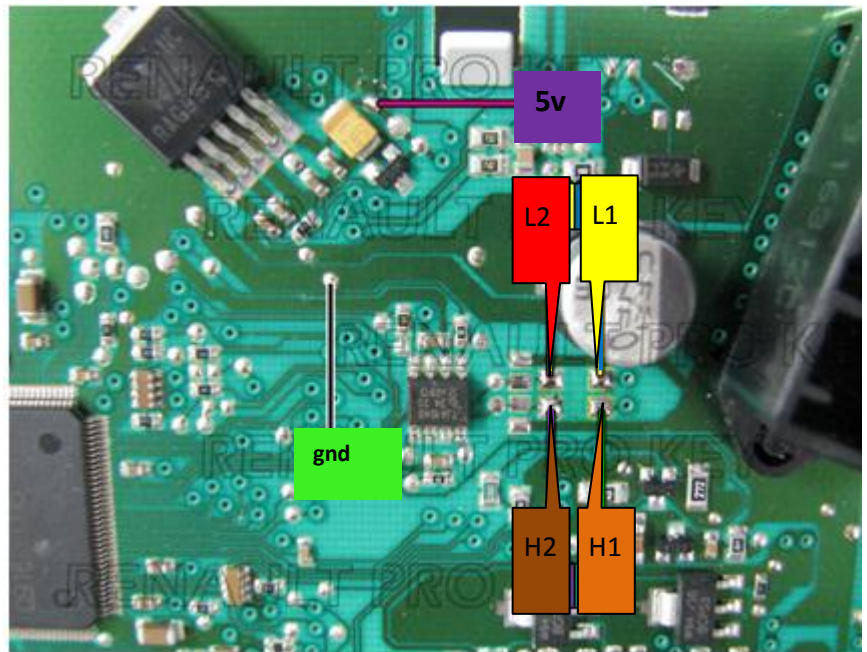
Renault Megane 3, Laguna 3 and Scenic 3

Megane3

- 1.** Remove dashboard from car and open back cover carefully to get full access to dashboard PCB.
- 2.** Change mileage in 24C16 eeprom.
- 3.** Remove and discard electronic component showed in the photo below. This component will be not soldered back to the PCB anymore.

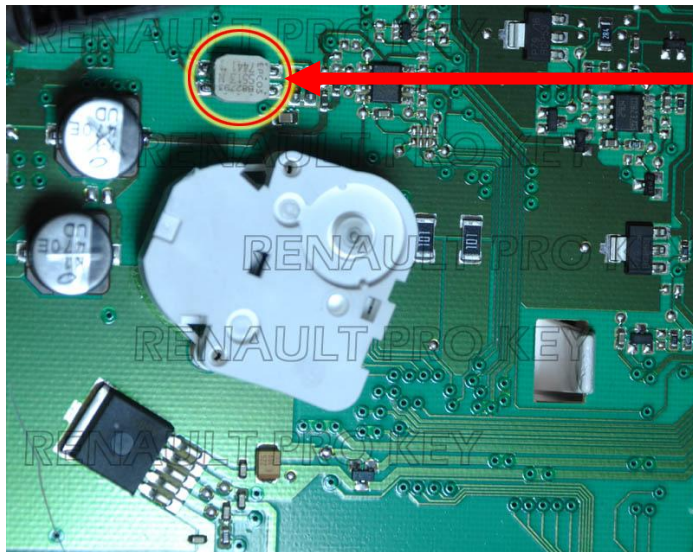


Remove this component

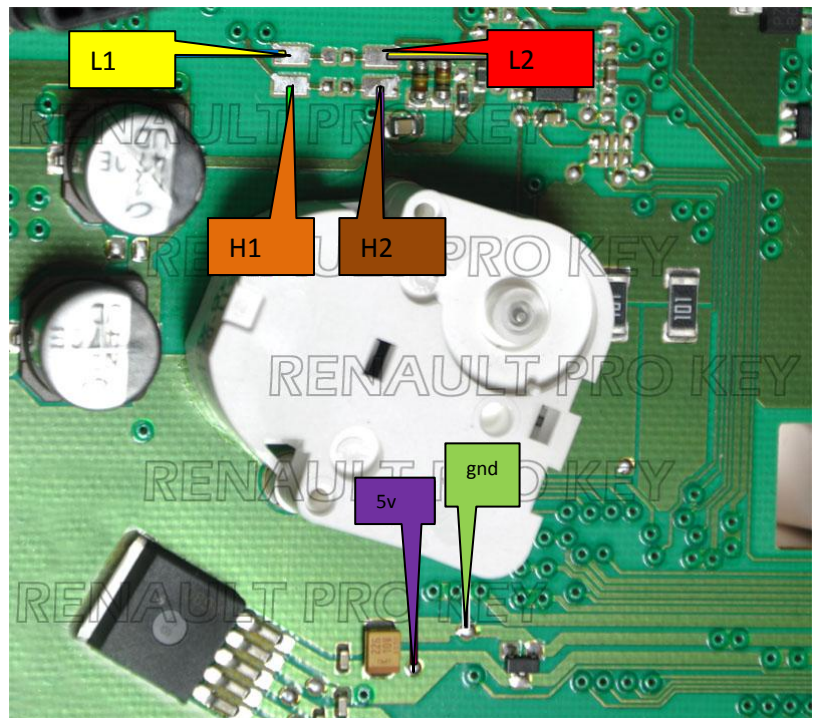


Laguna 3 – ALL JUMPERS OFF

1. Remove dashboard from car and open back cover carefully to get full access to dashboard PCB.
2. Change mileage in 24C16 eeprom.
3. Remove and discard electronic component showed in the photo below. This component will not be soldered back to the PCB anymore.

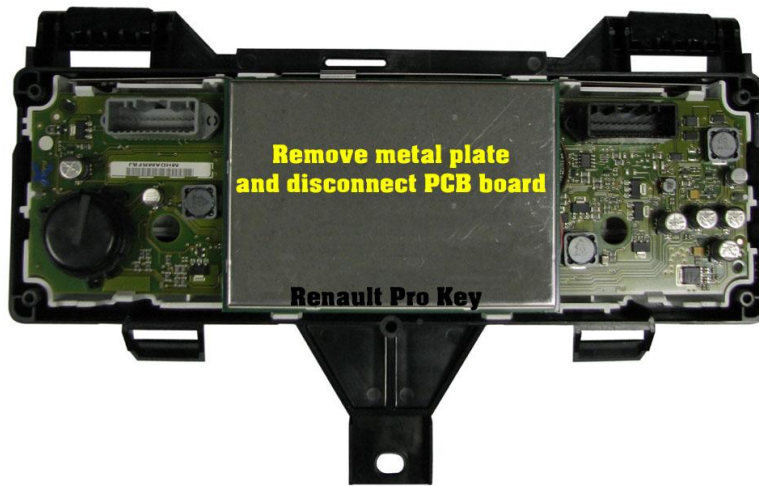


Remove this component

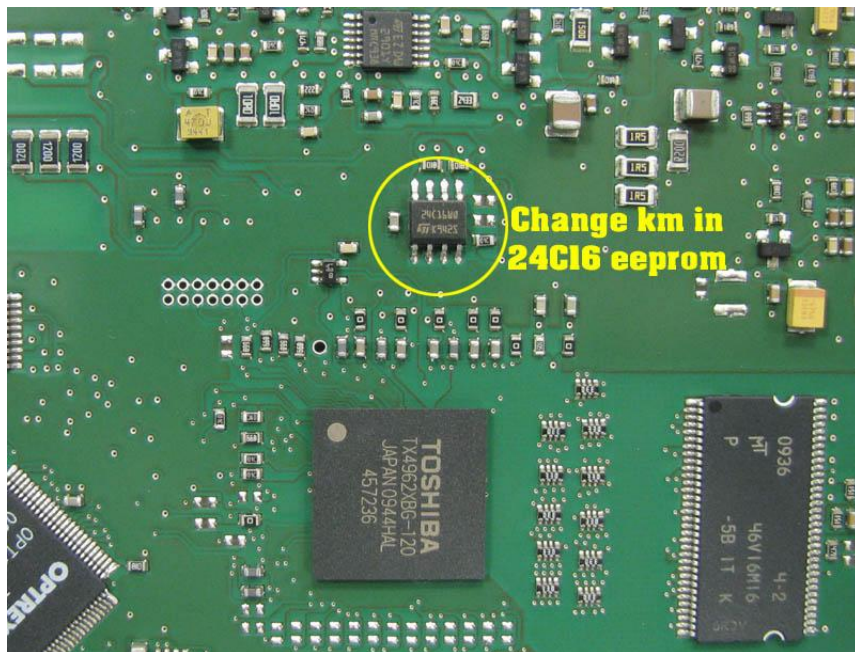


Scenic 3 – ALL JUMPERS OFF

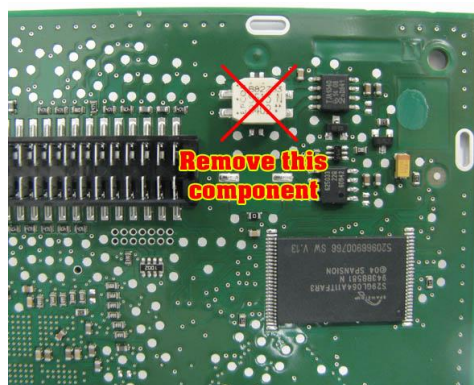
1. Remove dashboard from car and open back cover carefully to get full access to dashboard PCB.

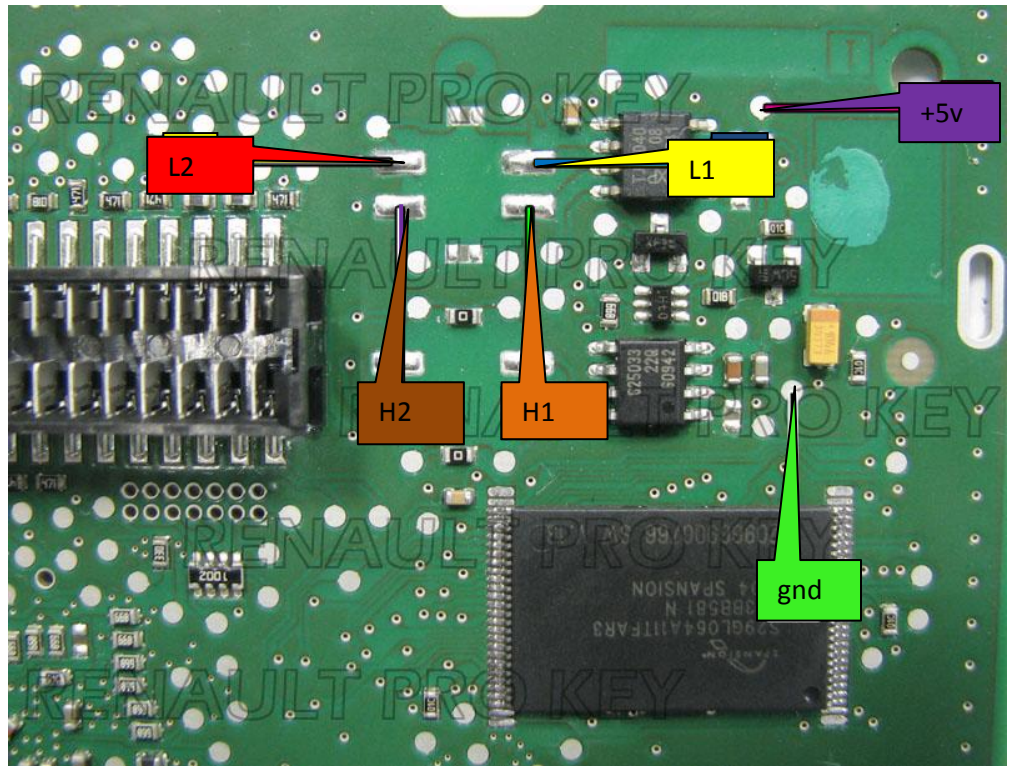


2. Change mileage in 24C16 eeprom.

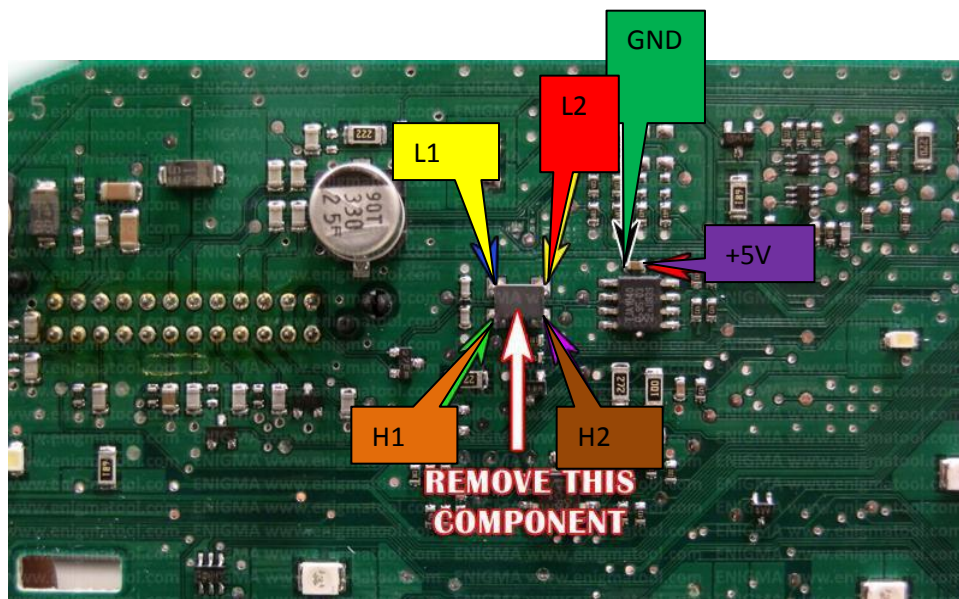


4. Remove and discard electronic component showed in the photo below. This component will not be soldered back to the PCB anymore.

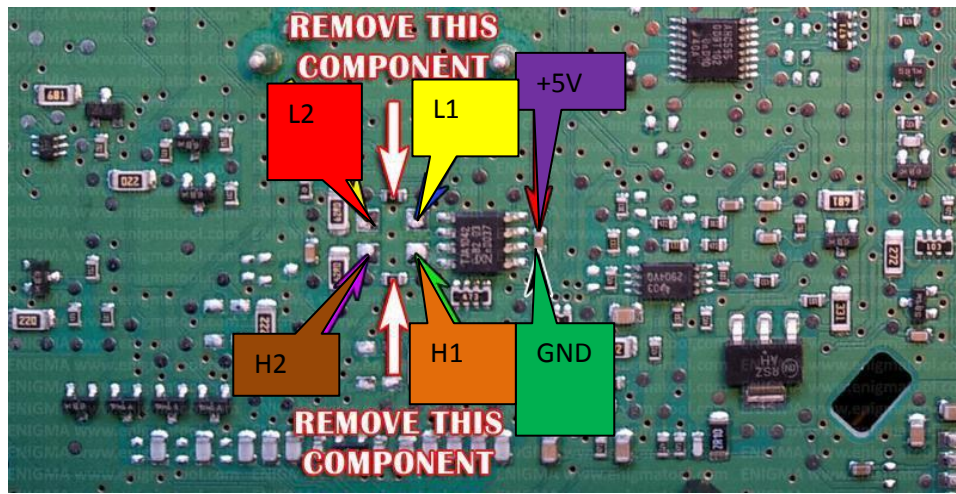




Renault Fluence – Back of dash – ALL JUMPERS OFF



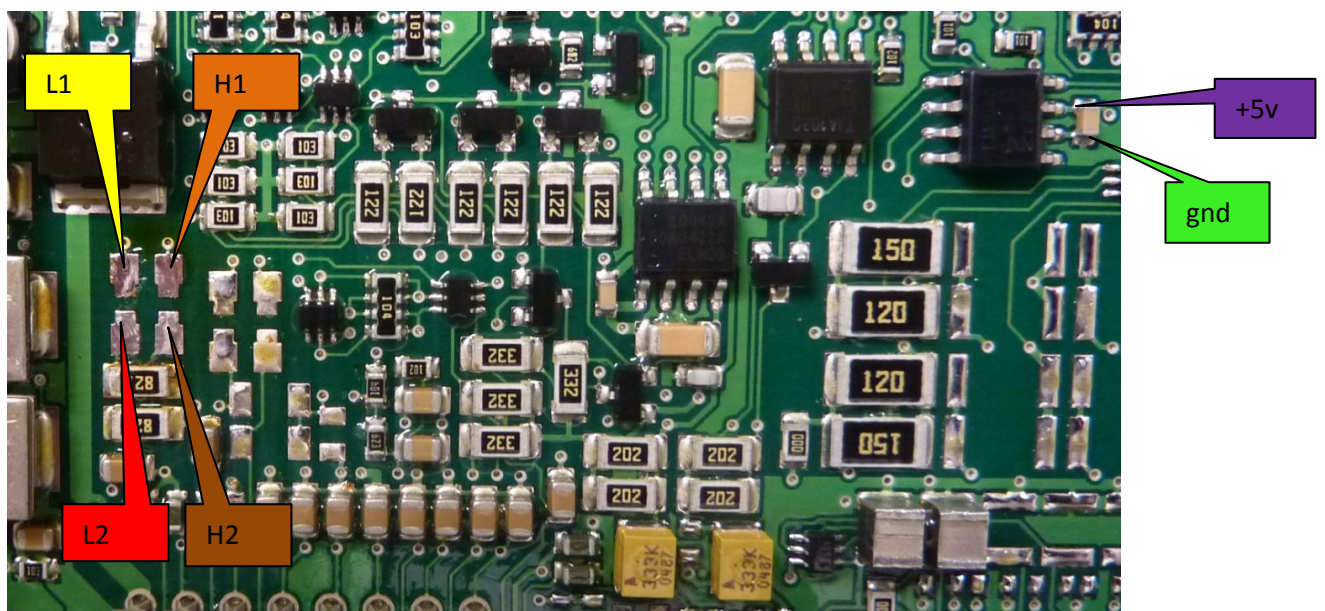
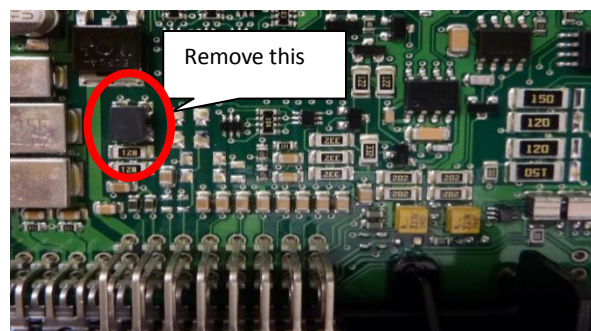
Renault Latitude – Back of dash – ALL JUMPERS OFF



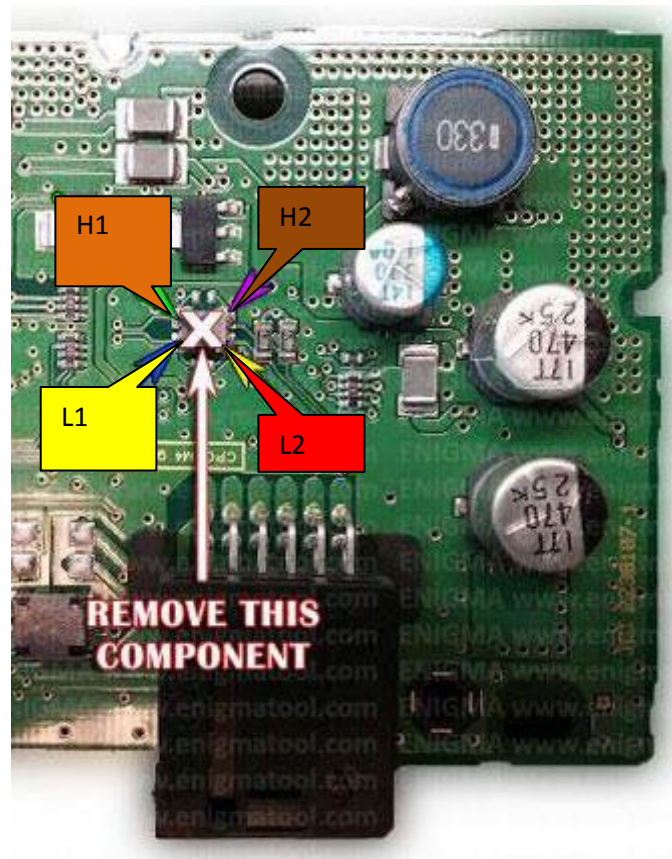
BMW CAS 4 – MCU 5M48H – JUMPERS 1 AND 2 ON

Suitable for 7 Series F01, 5 Series GT F07, 5 Series F10, 1 Series F20, 3 Series F30 fitted with CAS 4 with mcu 5M48H.

Disconnect car battery before removing the cas unit.



BMW 1 Series F20 / 3 Series F30 Back of dash – JUMPERS 1 AND 2 ON



BMW 5 Series F10 / 7 Series F01 Back of dash – JUMPERS 1 AND 2 ON

