

SID321_Renault_AddBlue _Emulator

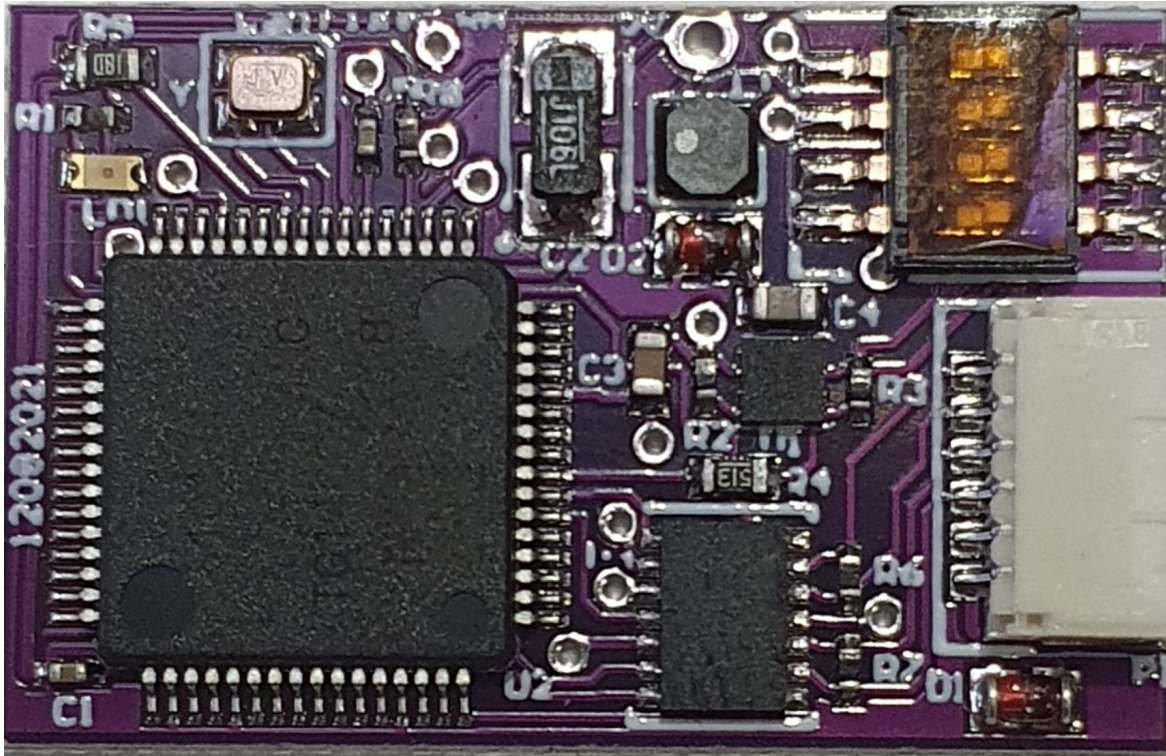
Table of contents

Getting Started	3
System requirements	3
Getting help	4

Getting Started

System requirements

Emulator SID321:



Description:

With Addblue system we can have few common problems:

- 1- Car start , in ECU we have errors from Add blue.
- 2- No any error in ECU and car not start (show KM to stop the car 0km (or 50km)
- 3- Car start in ECU not any errors. Car count down km to stop the car and show value 100-800 km

in Case 1:

We have to solder 4 wires as on picture and disconnect addblue pump and NOX2 . After few switch ignition on/off all errors should be possible to erase and all system should be ok , no eny errors should be displayed on dashboard.

in Case 2 or 3:

We have to solder 4 wires to wires in cabin and disconnect addblue pump and NOX2 .

And now if you have possibilty you can make online update of ECU SID321 by orginal tester. After reflash all errors should be possible to erase and all is done.

In case when you have not access to reflash ECU - you have to solder wires Blue and white to OBD as described in next chapter. In this case erros on display stay but will be possible to start the car and normal use it.

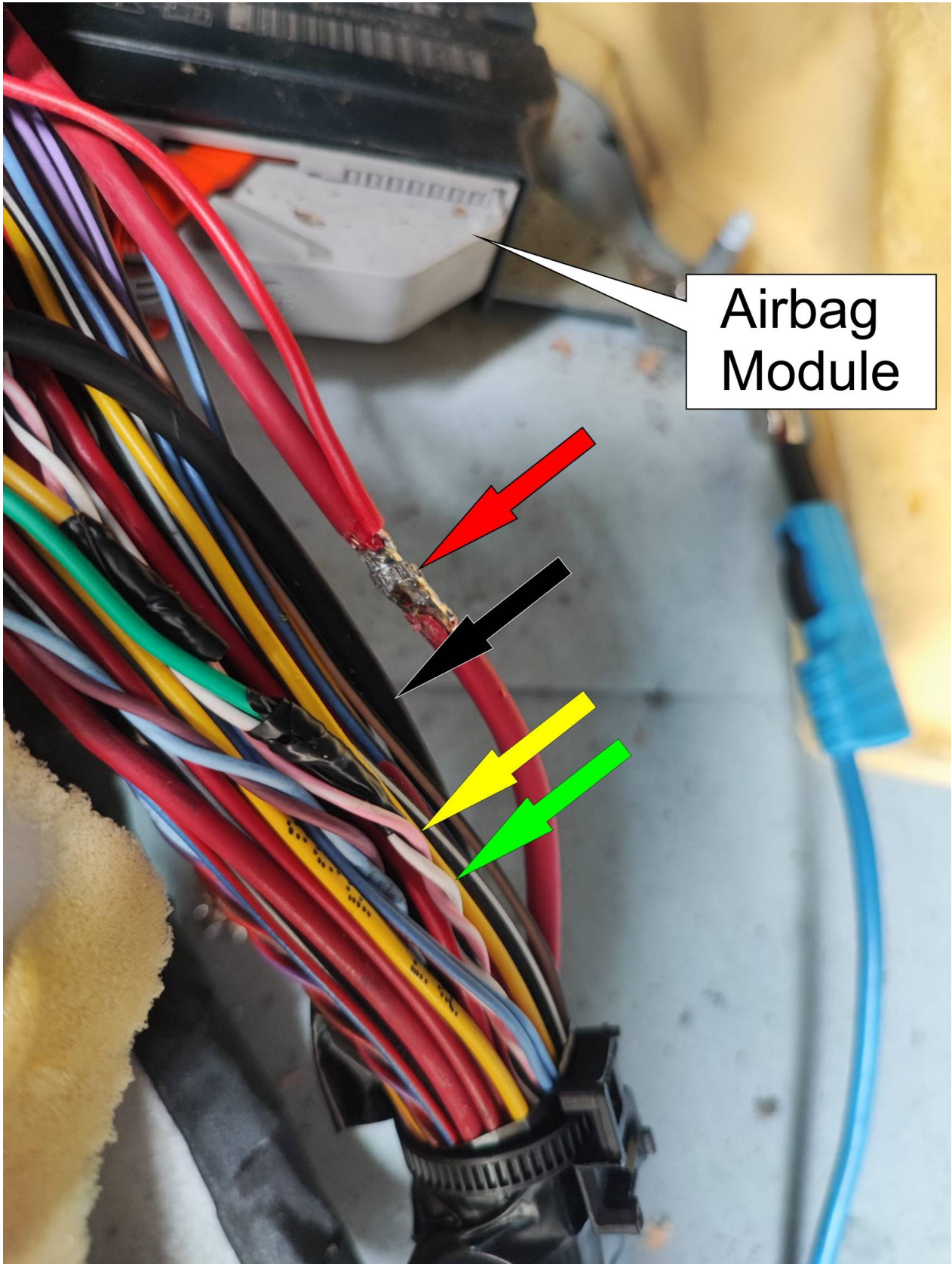
We recommended to reflash ECU in service to remove all errors from dashboard

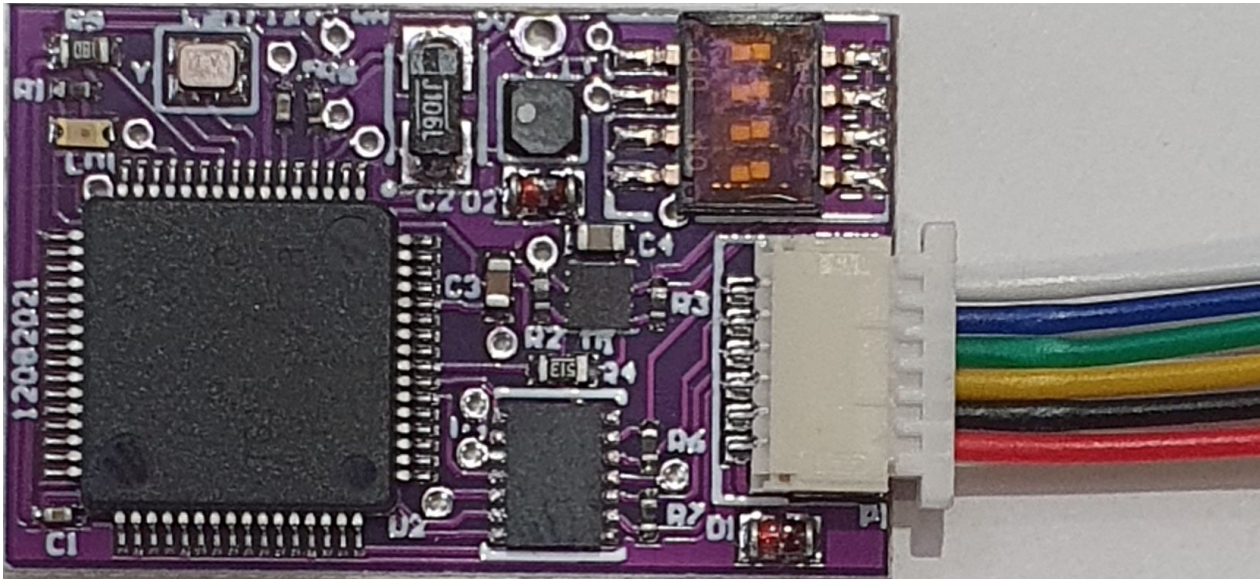
Getting help

Inside cabine at Airbag sensor module we have wires as on photo.
We have to solder 4 wires as on picture from Emulator.
Disconnect addblue pomp and NOX2 sensor !!!
We don't have to cut any wires !!

Emulator required to proper work NOX1 . If NOX1 is faulty then Emulator will not works.

Switches on Emulator should be set :1 , 4 -OFF ; 2 , 3-ON





Additionally Emulator has function to enable start car when car is blocked (counted km 0 and start not permitted)

in this case you have to solder White wire to PIN 6 OBD connector and pin Blue to pin 14 OBD. Additionally red wires of filter do not solder as on picture but find 12V (KL15 , after ignition) and connect Emulator to this wire

Localization Addblue pump



Disconnect Pump connector as on picture:



Disconnect NOX2 sensor as on picture

