

# Clio\_5\_Dashboard\_ABS

## Table of contents

---

Getting Started .....	3
System requirements .....	3
Getting help .....	3
Dashboard Kansei (LOW) .....	3
Dashboard Visteon (Medium) .....	5
Dashboard VDO (High) .....	6
ESP/ABS (Bosch) .....	6

## Getting Started

---

### System requirements

1. UHDS tool
2. EEprom programmer (only for Kansei dashboard)
3. Activation RT0038

### Getting help

Reanult Clio5 Capture II has 3 kinds of dashboard  
For now supported is 2 of 3 models.

Additionally need to program ABS

Dashboard and ABS/Esp must be done by CAN.  
Additionally dashboard Kansei required prepare EEprom

All opertaions are safety

### Dasboard Kansei (LOW)

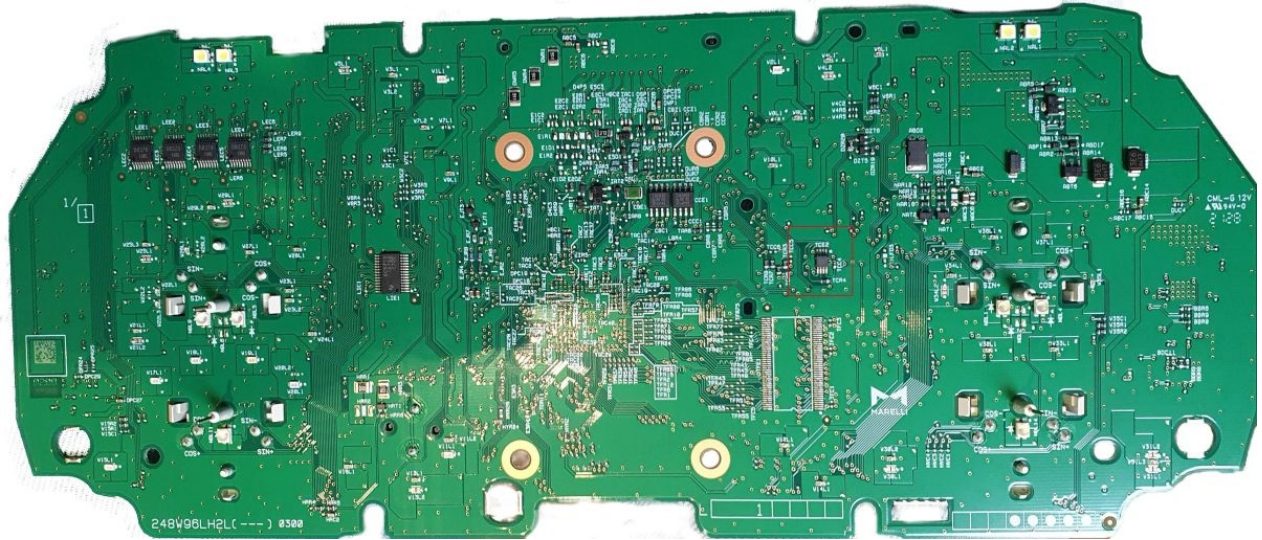
Change Km is possible by dash connector with previous prepare EEprom 95640.



Please use EEprom programmer for read/write 95640

You can open dash and decolde 95640 eeprom  
Or you can solder wires of programmer to dash service connector

In red frame you have market eeprom location.



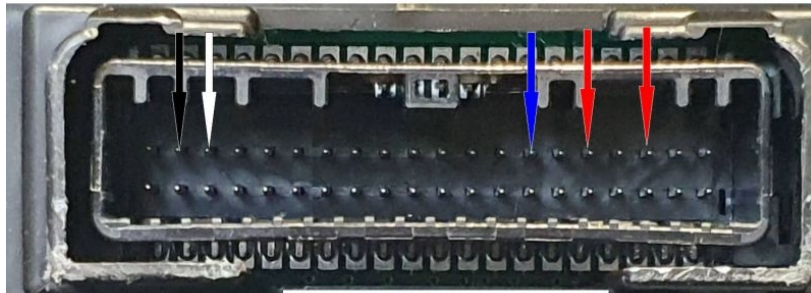
Connection by service points without open dashboard

## EEPROM 95640 (3.3v)



After prepare EEprom you can set km by Dash connector

## Clio5 Dashboard Connector



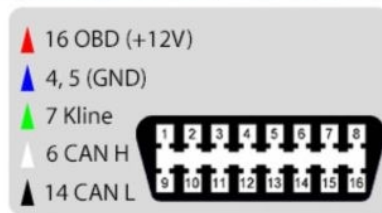
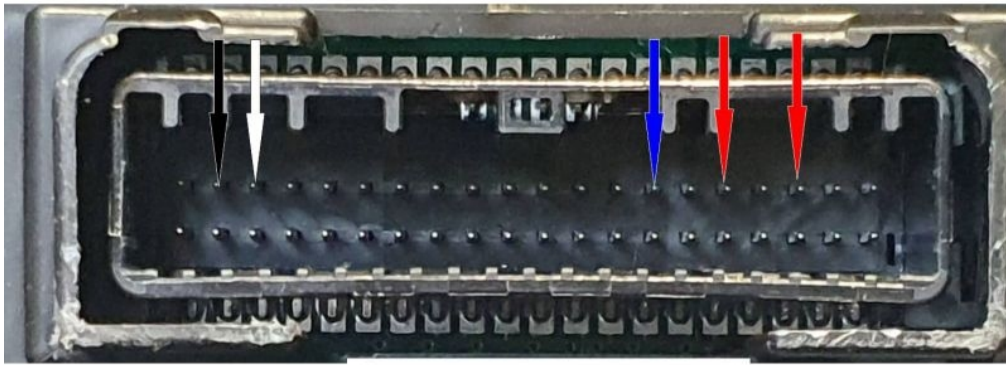
▲ 16 OBD (+12V)	1	2	3	4	5	6	7	8
▲ 4, 5 (GND)	9	10	11	12	13	14	15	16
▲ 7 Kline								
▲ 6 CAN H								
▲ 14 CAN L								

### Dashboard Visteon (Medium)

Dashboard can be done by Dash Connector



# Clio5 Dashboard Connector

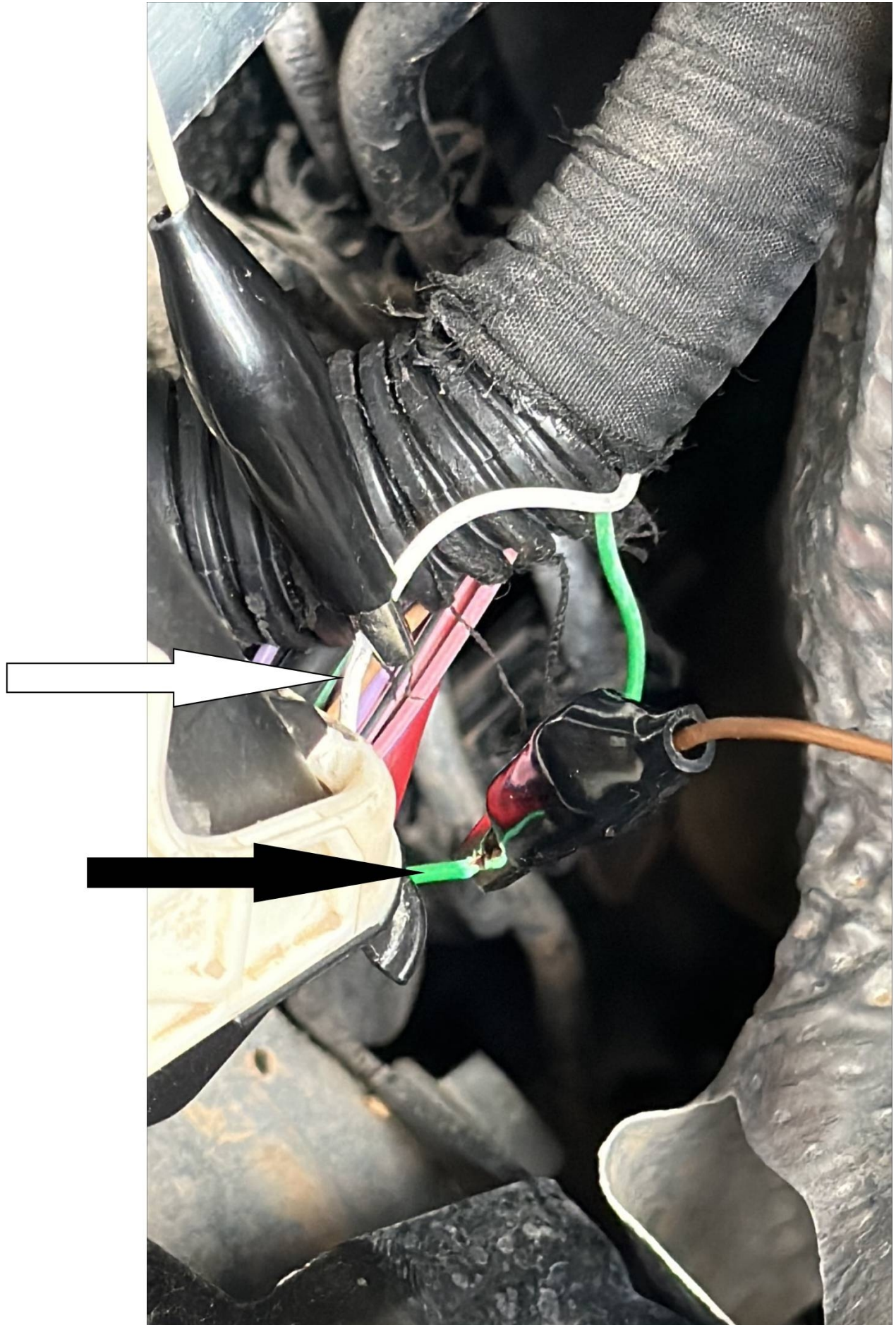


## Dashboard VDO (High)

Currently not supported

## ESP/ABS (Bosch)

ESP/ABS module must be programmed by CAN.  
 possible by connecto CAN at ABS /ESP module by connecto to white and green wires.  
 You have to connecto only CAN H and CAN L of uhds (2 wires) for r/w KM



Pinout of ABS/ESP connector

