

# FiatTipo\_2024\_R7F70142

# 1

Table of contents

---

Getting Started ..... 3

    System requirements ..... 3

    Getting help ..... 3

## Getting Started

---

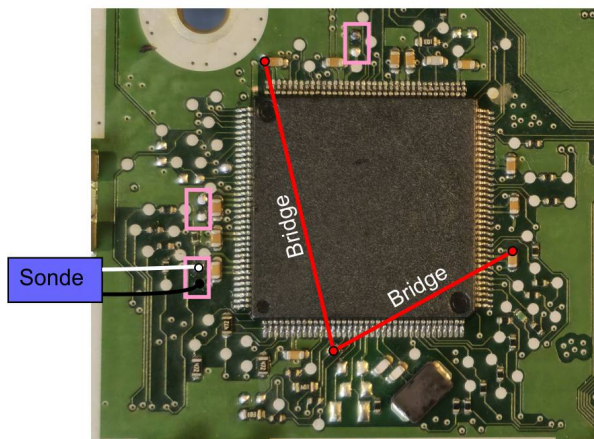
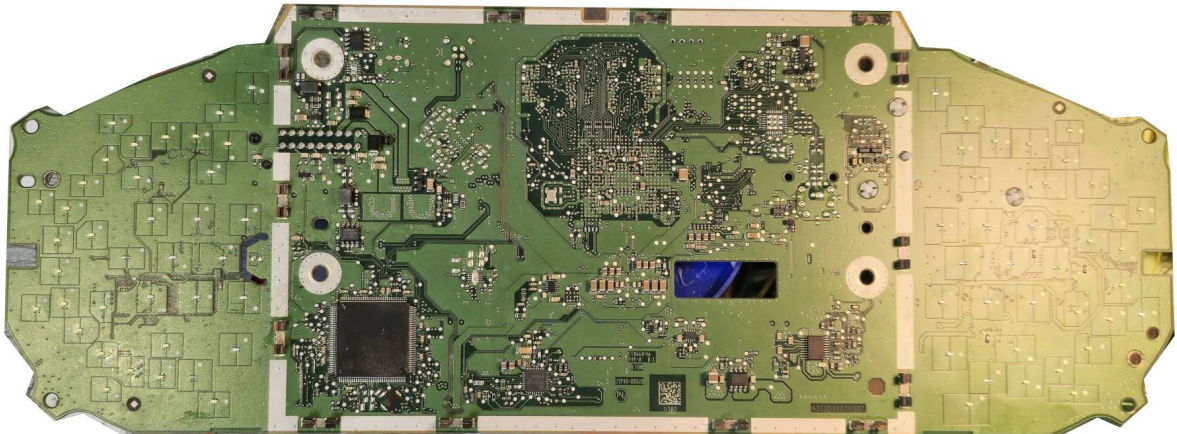
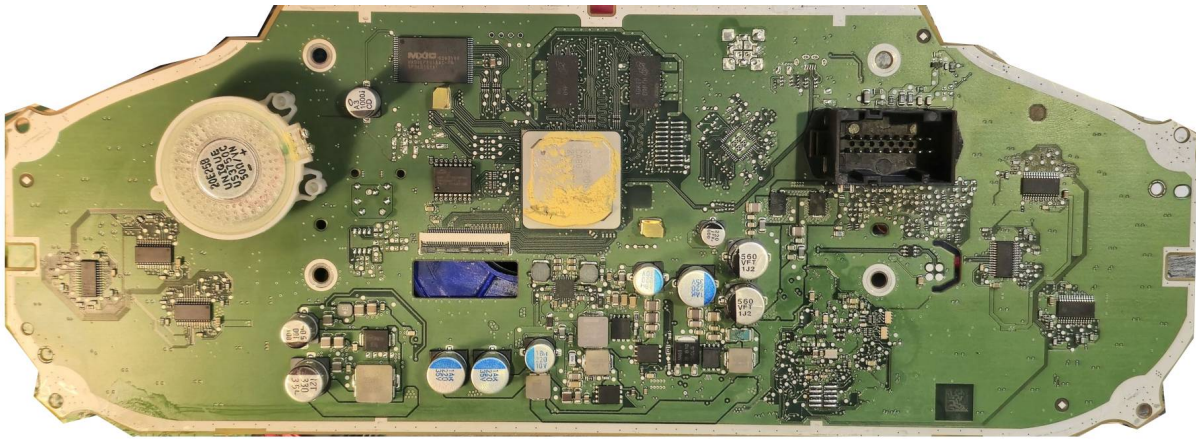
### System requirements

1. UHDS with License FT0031
2. Jtag with License JG0050
3. Sonde RH850 v1
4. Optional Cable Bench Connection

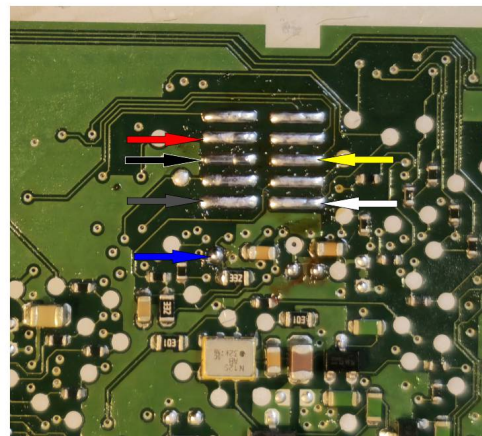
### Getting help

Fiat Tipo 2024 Dashboard R7F701421

Set Km lower as original required make connection as on picture:



Connet by wire this 3 pint together



Remove this Component .  
After programming install Back  
If you lost it you can solder 100nf  
capacitor.

Sonde 0.33R



Bench Connection. By Dash Connector we can set km Up. If we want set km lower we must do it by Jtag  
If we do km by Jtag connect dash connecotr is not required !!!

