

# Hyundai\_Sonata\_Continental\_RH850\_(R7F701406) \_2022

## Table of contents

---

Getting Started .....	3
System requirements .....	3
Getting help .....	3

## Getting Started

---

### System requirements

For Set New Km we need:

UHDS Tool

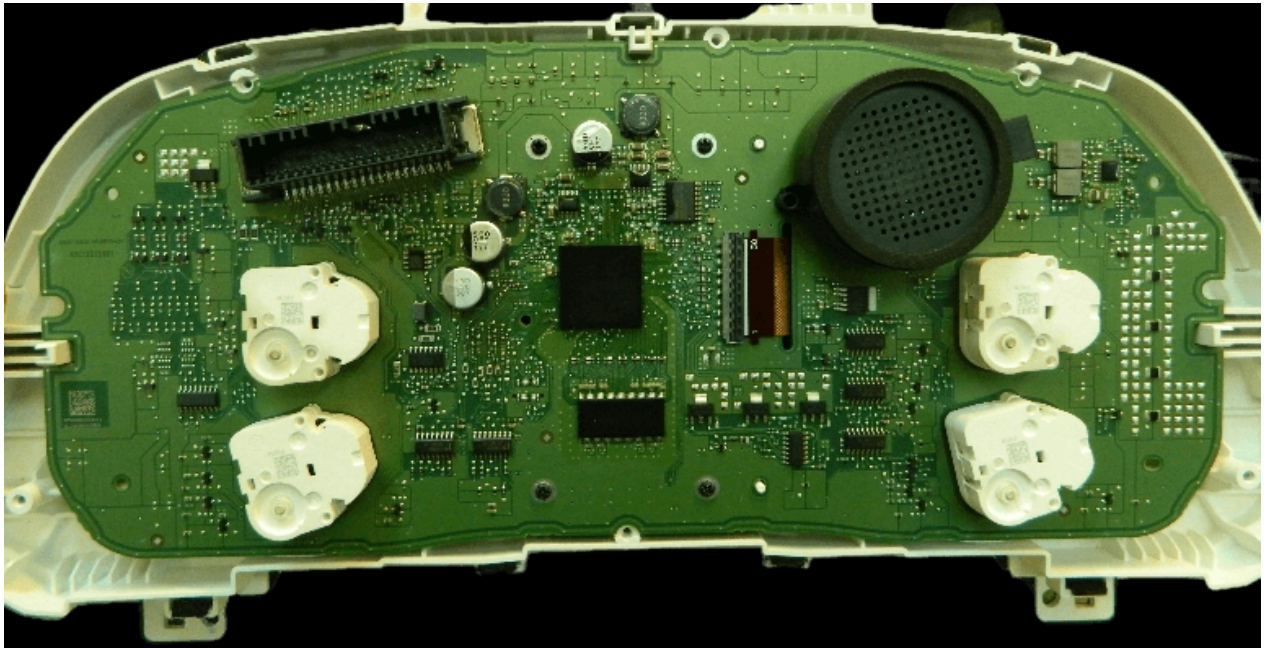
Jtag Tool

Licence KA0018.

2x Free USB Port for connect UHDS and Jtag in same time

### Getting help





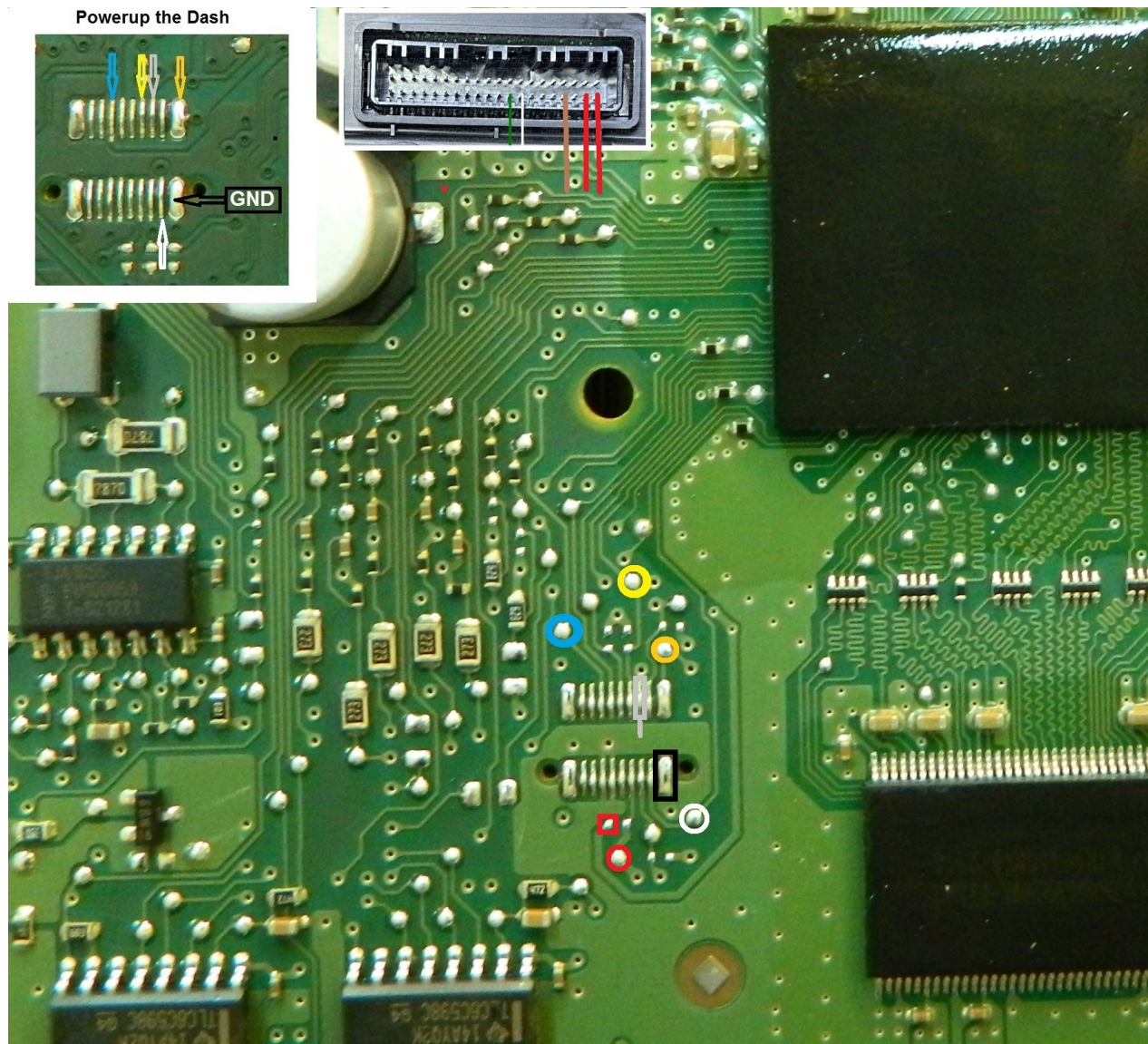
We Have access to most option by Dash Connector. By OBD can be no possible because car has gateway.

- Read KM
- Write KM (required prepare dash by Jtag)
- Read EEPROM
- Write EEPROM

First please check you MultiProg( Jtag ) soft version . Required soft 1.42.3.8 or higher.

For Adjust Km we need to remove dash and connect by solder wires Jtag as on Picture:





If you use both REDs wires from Multiprog, you don't need to powerup the dash

### **Please connect UHDS and JTAG to USB Ports in you computer**

Now we have to press button Prepare Flash. Jtag automatically save backup of flash file.

After operation finish you can desolder wires and put dash into car.

Now we can write KM by OBD.