

Mercedes_W907_W910

Table of contents

Getting Started	3
W907 ,W910 Half Fis	3
New topic	3
System requirements	3
Getting help	3
W907,W910 Full Fis	5
System requiments	5
Getting Help	6

Getting Started

W907 ,W910 Half Fis

New topic

System requirements

Mercedes W907 1/2Fis



Required:
UHDS Tool
Activation MS0015
Jtag Tool JG0025

Getting help

For change Millage we have to do first Step:

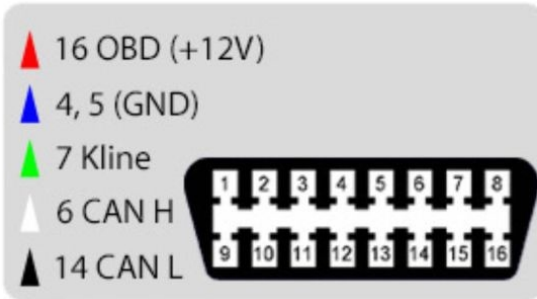
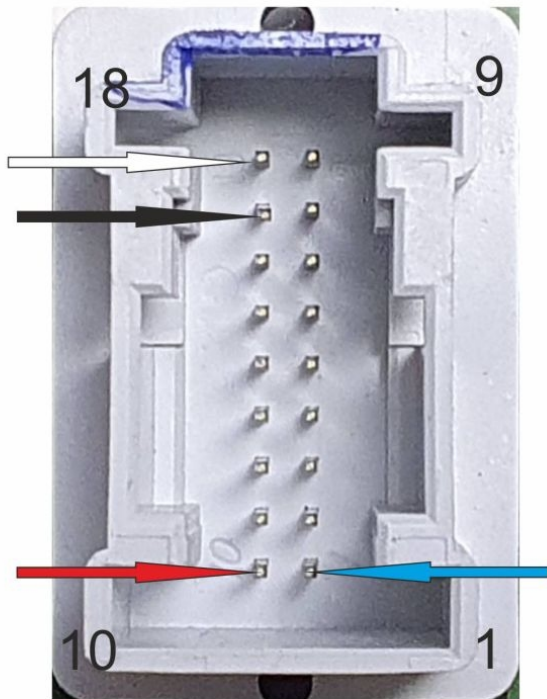
1. Connect Jtag as on picture and press button "Prepare Flash"
After soft finish disconnect Dash and put back into car
2. Now we can Write KM. Best is do it by Dash connector on bench.
Some cars give possibility to do OBD some not.

For Read/Write EEprom we don't need prepare Flash

W907 R7F701414



Mercedes W907 Dash Connector



W907,W910 Full Fis

System requiments

Mercedes W907 Full



Required:

UHDS Tool
Activation: MS0017

Jtag Tool
Activation: JG0025

Getting Help

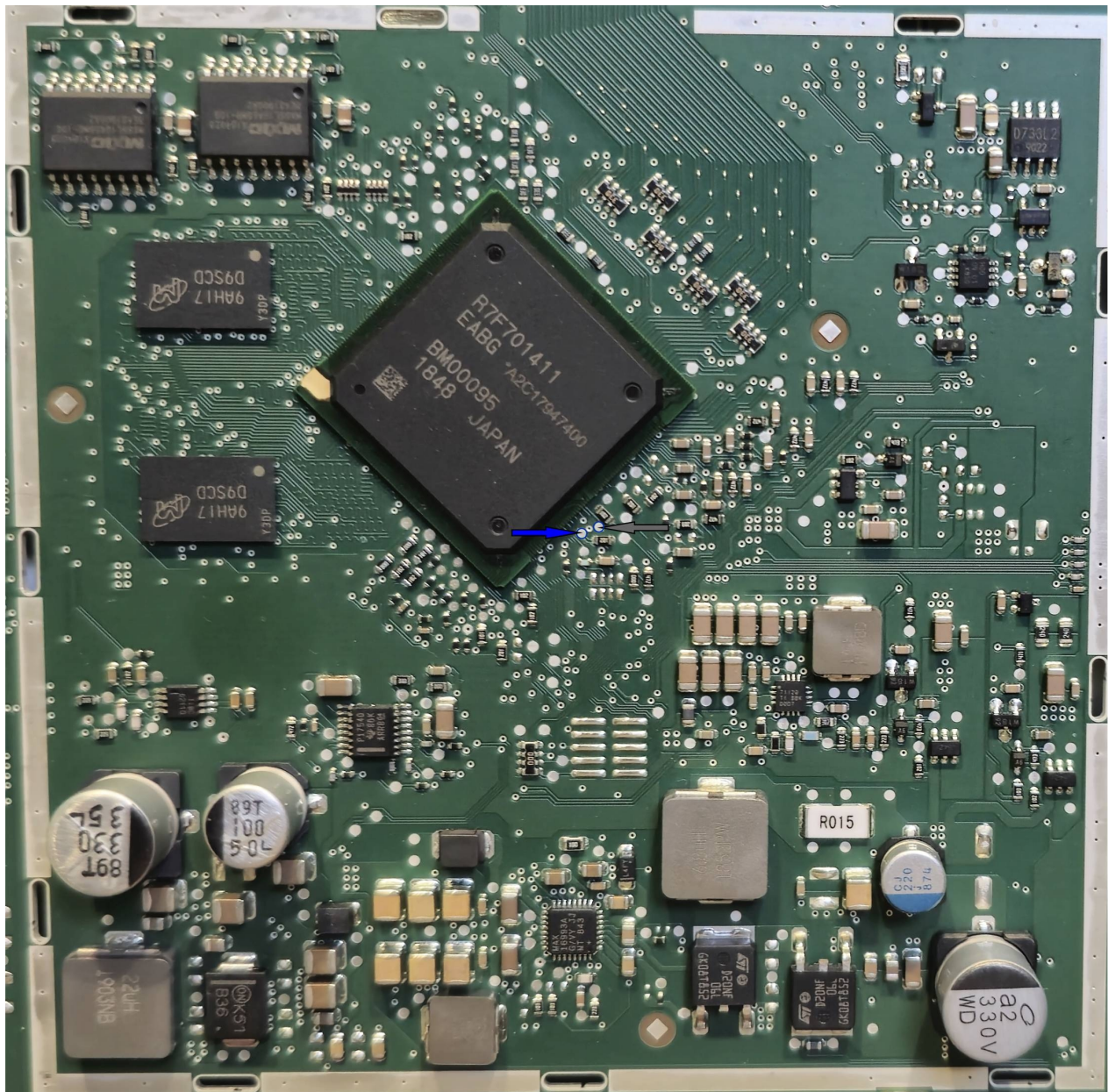
For change Millage we have to do first Step:

1. Connect Jtag as on picture and press button "Prepare Flash"
After soft finish disconnect Dash and put back into car
2. Now we can Write KM. Best is do it by Dash connector on bench.
Some cars give possibility to do OBD some not.

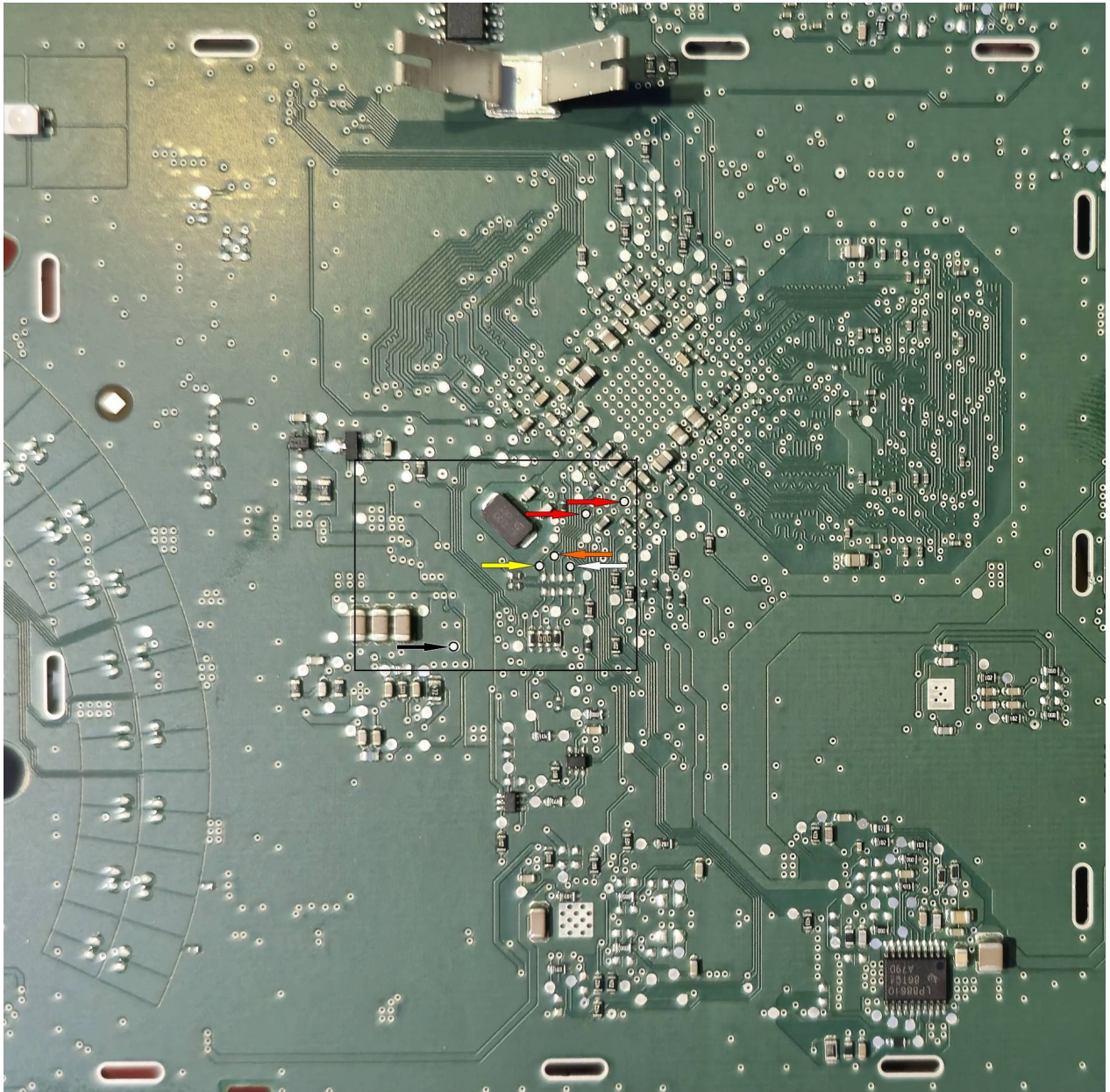
For Read/Write EEprom we don't need prepare Flash

Jtag Connection diagram:

Top site board



Bottom site board



Mercedes W907 Dash Connector

