

Nissan_S6J329C

Table of contents

Requiments 3

Dashboard 3

Dashboard Connector 4

Dashboard Jtag Connection 4

Instalation Can Filter 6

Requiments

1. UHDS
2. Jtag
3. Activation JG0034
4. Activation NS0007

Dasboard has S6J329C. We can read/write it by Jtag in boot mode.

KM are stored in ABS too. If we want set km lower as orginal we must change km in ABS or use Can Filter

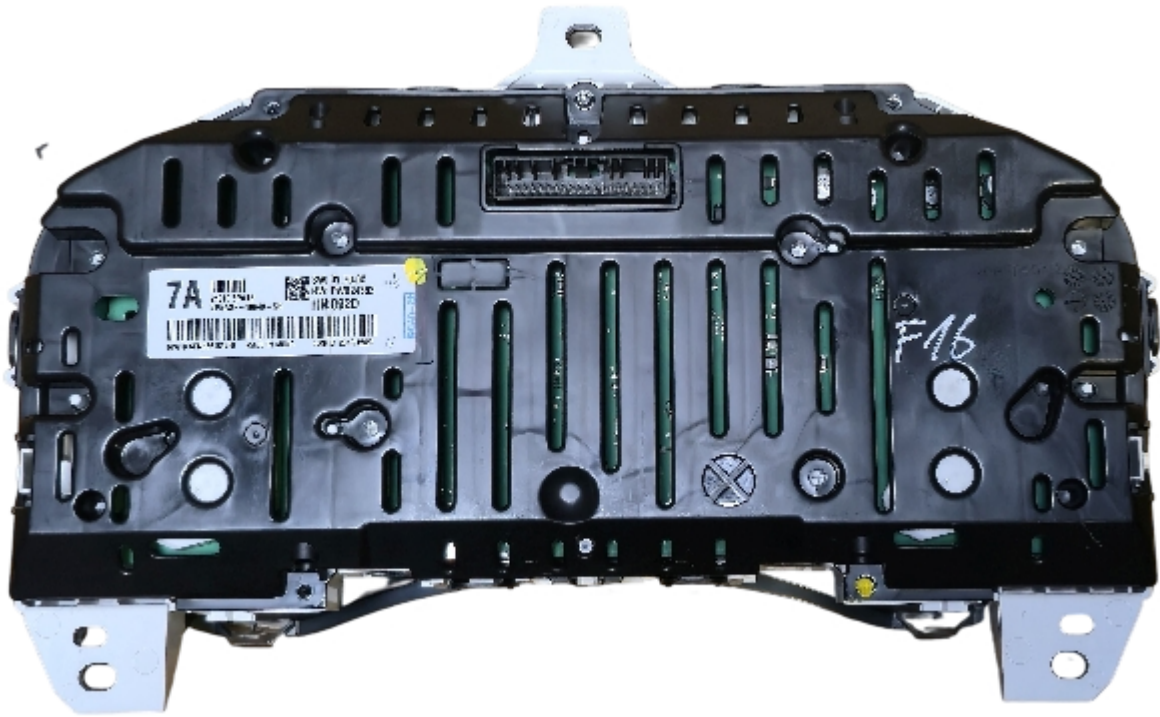
You can buy can filter:

https://smok.com.pl/index.php?id_product=645&controller=product&id_lang=1

Dashboard

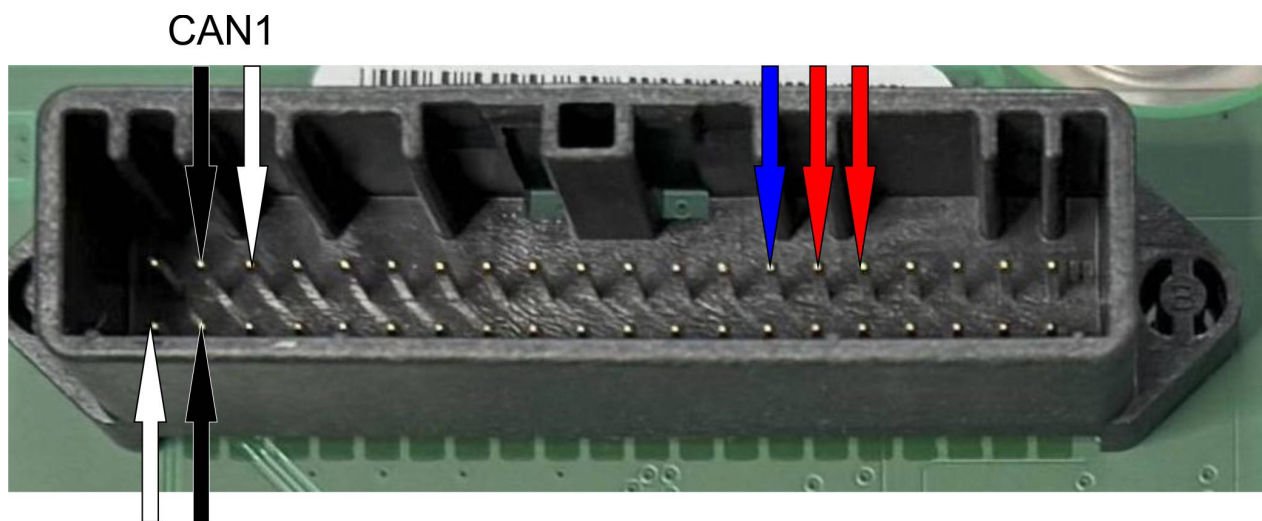
Supported Dashboard Nissan Juke, Sentra S6J329C





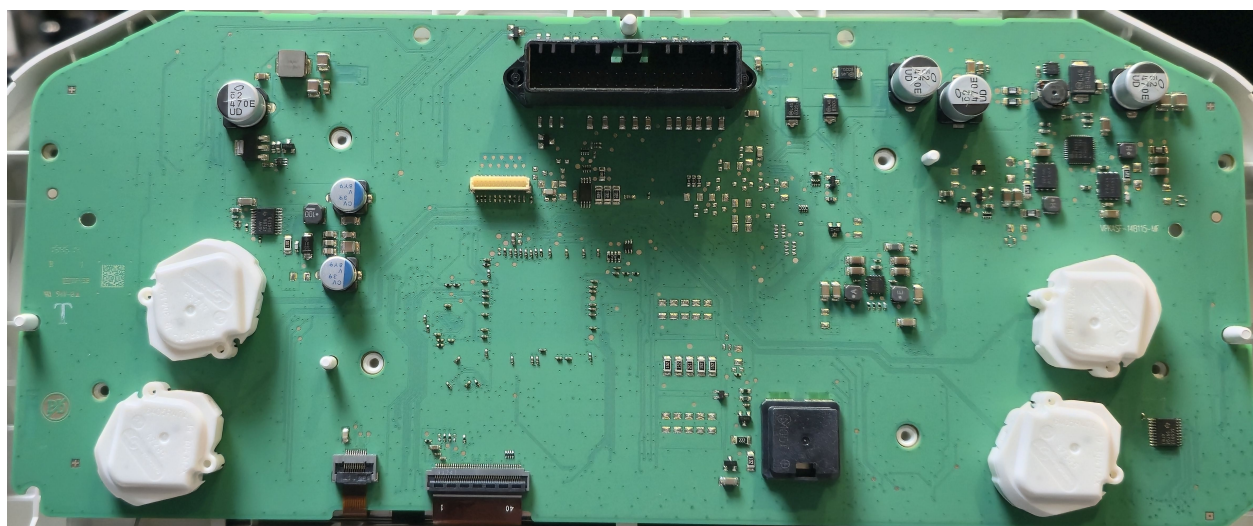
Dashboard Connector

Connect +12V and Gnd for switch On dashboard on bench

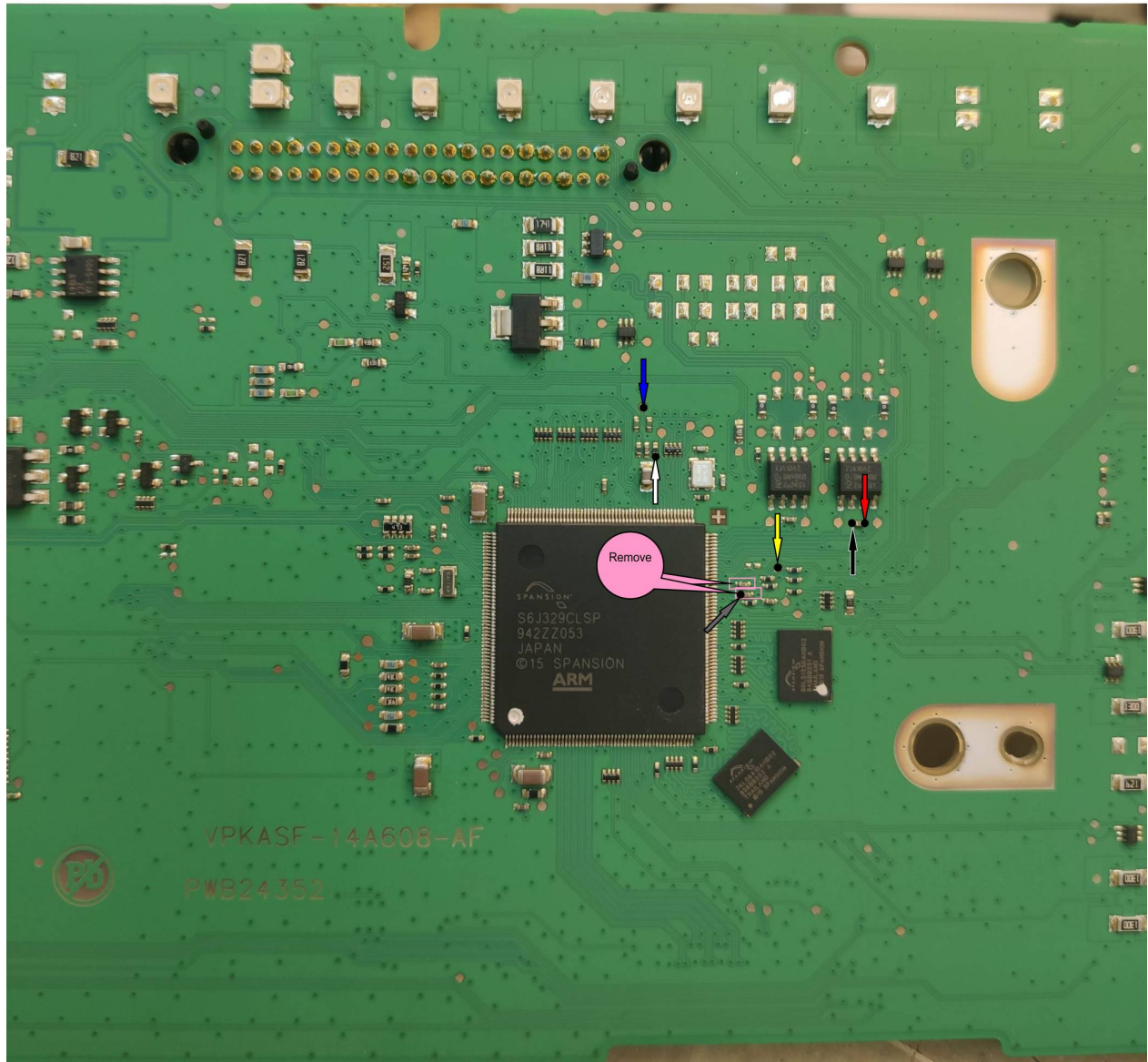


Dashboard Jtag Connection

We have to connect UHDS and Jtag to USB ports and solder wires to board as manual. Now you can read write km.



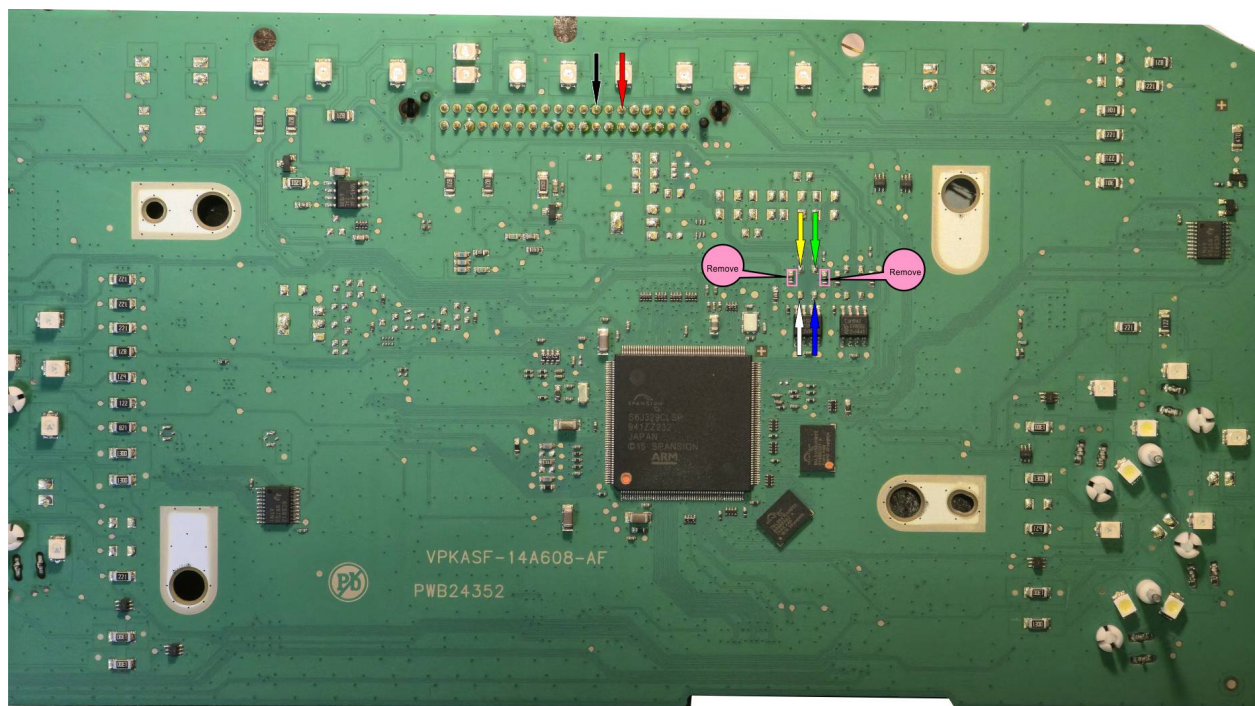
S6J329C 16MHz Boot Mode



Instalation Can Filter

For Set New km in car You have to program Dashboard and install can filter.
For now programming ABS is very hard - require open ABS and is dangerous.
Best solution is use CAN Filter.
If you want to set higher km as orignal can filter is not required.

[Buy Can Filter](#)



Can Filter Switch Set:
1-OFF
2,3,4-ON