

# Nissan\_S6J332E

Table of contents

---

Requiments ..... 3

Dashboard ..... 3

Dashboard Connector ..... 4

Dashboard Jtag Connection ..... 4

Instalation Can Filter ..... 5

## Requiments

---

1. UHDS
2. Jtag
3. Activation JG0034
4. Activation NS0007

KM are stored in ABS too. If we want set km lower as original we must change km in ABS or use Can Filter

You can buy Can filter:

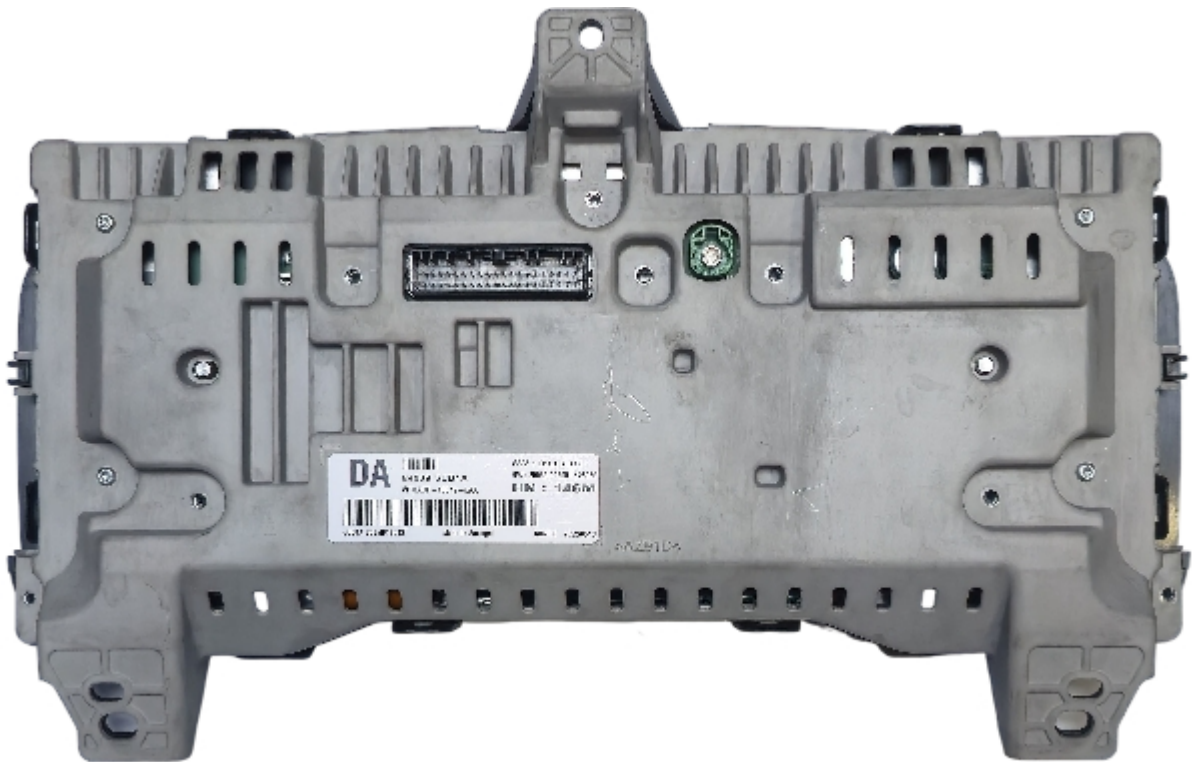
[https://smok.com.pl/index.php?id\\_product=645&controller=product&id\\_lang=1](https://smok.com.pl/index.php?id_product=645&controller=product&id_lang=1)

## Dashboard

---

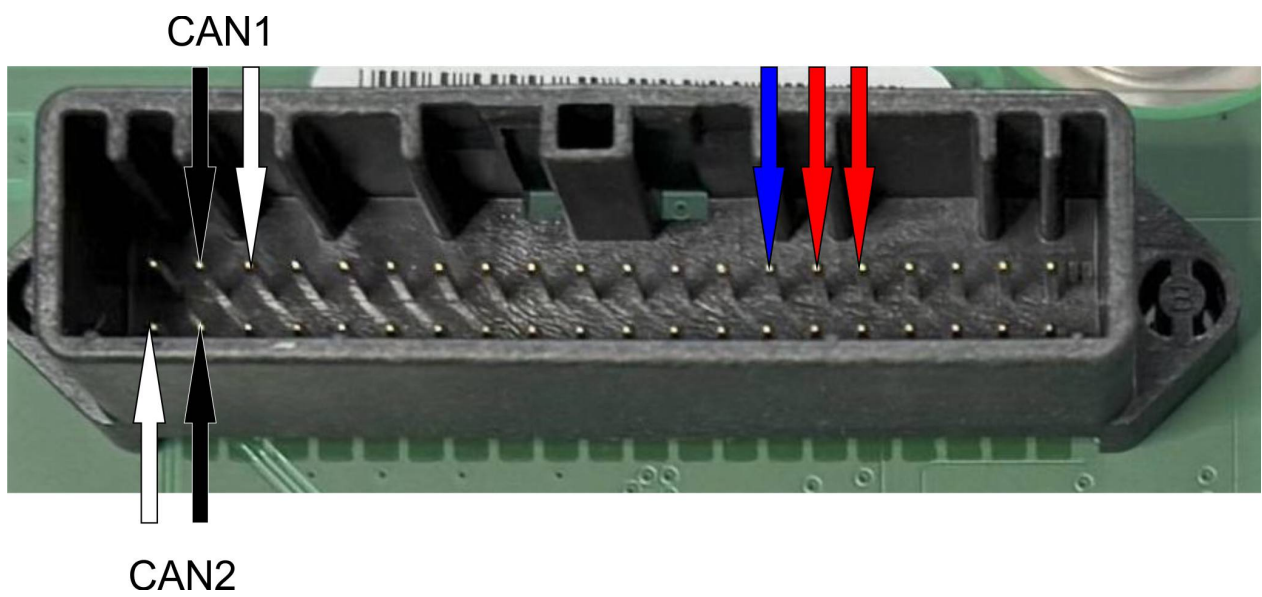
Supported Dashboard Nissan Qaskai and Mitsubishi Outlader S6J332E





## Dashboard Connector

Connect +12V and Gnd for switch On dashboard on bench

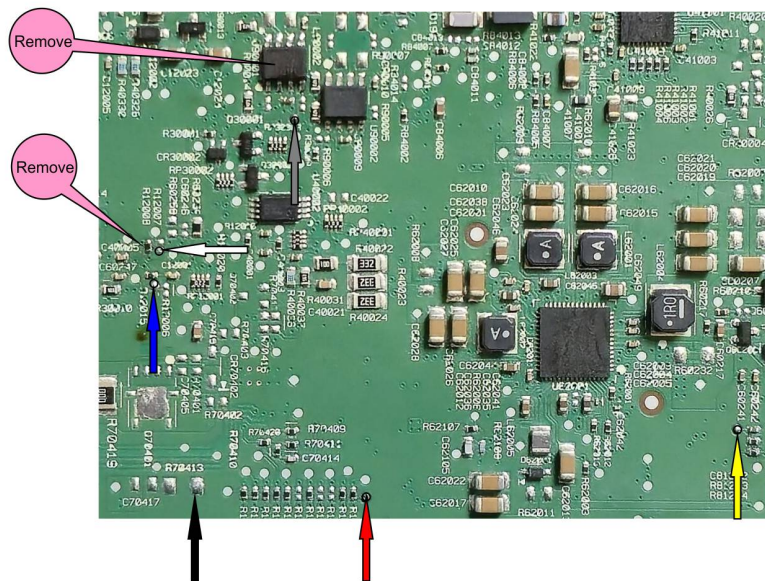
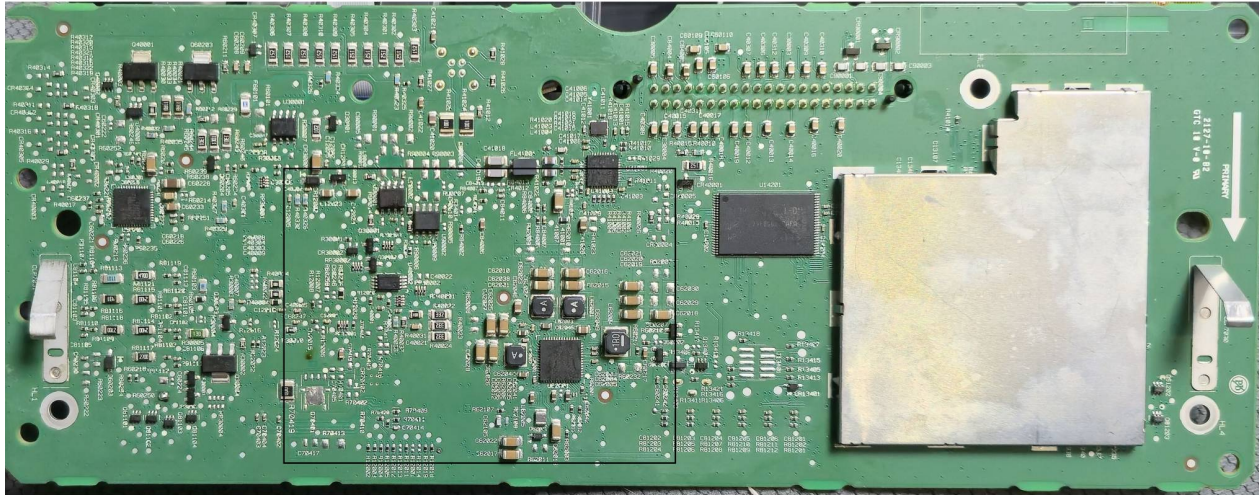


## Dashboard Jtag Connection



We have to connect UHDS and Jtag to USB ports and solder wires to board as manual. Now you can read write km.

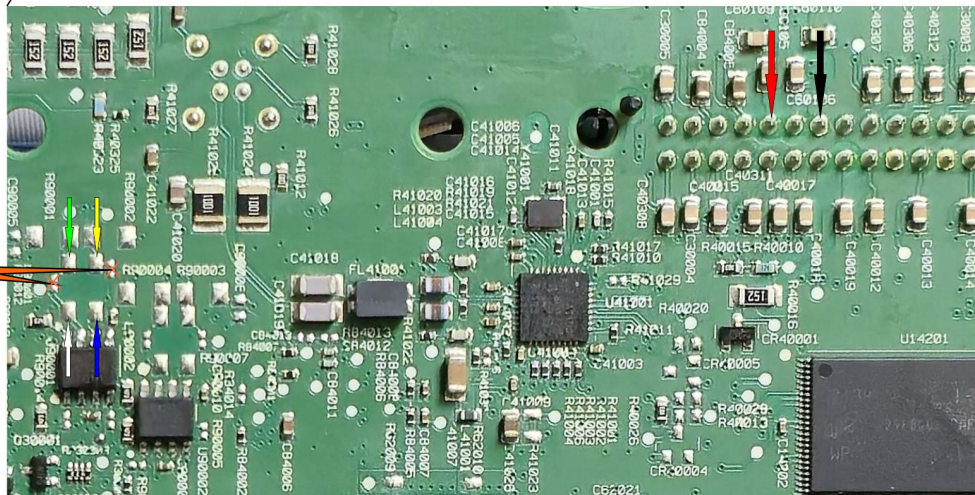
## S6J332E 16MHz Boot Mode



### Installation Can Filter

For Set New km in car You have to program Dashboard and install can filter.  
For now programming ABS is very hard - require open ABS and is dangerous.  
Best solution is use CAN Filter.  
If you want to set higher km as original can filter is not required.

[Buy CAN Filter](#)



Can Filter Switch Set:  
1-OFF  
2,3,4-ON