

Peugeot_3008_2021_MM_
CMB_DNX

Table of contents

Getting Started	3
Getting help	3

Getting Started

Getting help

Dashboard MM-CMB-DNX

Dashboard has glued display. For access to eeprom we have to unglue it.

We have to do very careful because display is very big and is easy to broke it.

Glue is very strong.

We have to take sharp knife and cut this glue.

On picture 4 you can see on green color where we have to cut glue. Red place please dont touch and be very carefull because in this place are

wires this are connect TFT display to board !!!

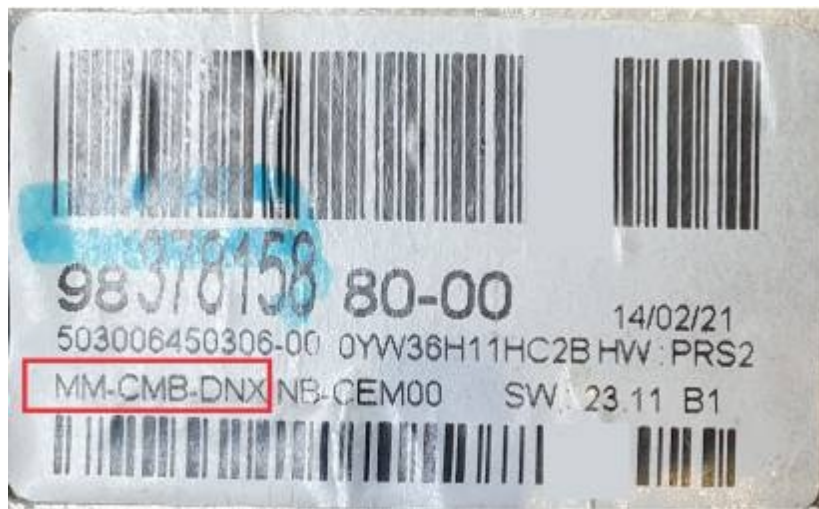
On picture 5 you have marked EEprom 95160 which we have to read prepare by dump tool and write.

We can do it in circuit be eeprom programmer.

Picture 1 - Front look on dashboard



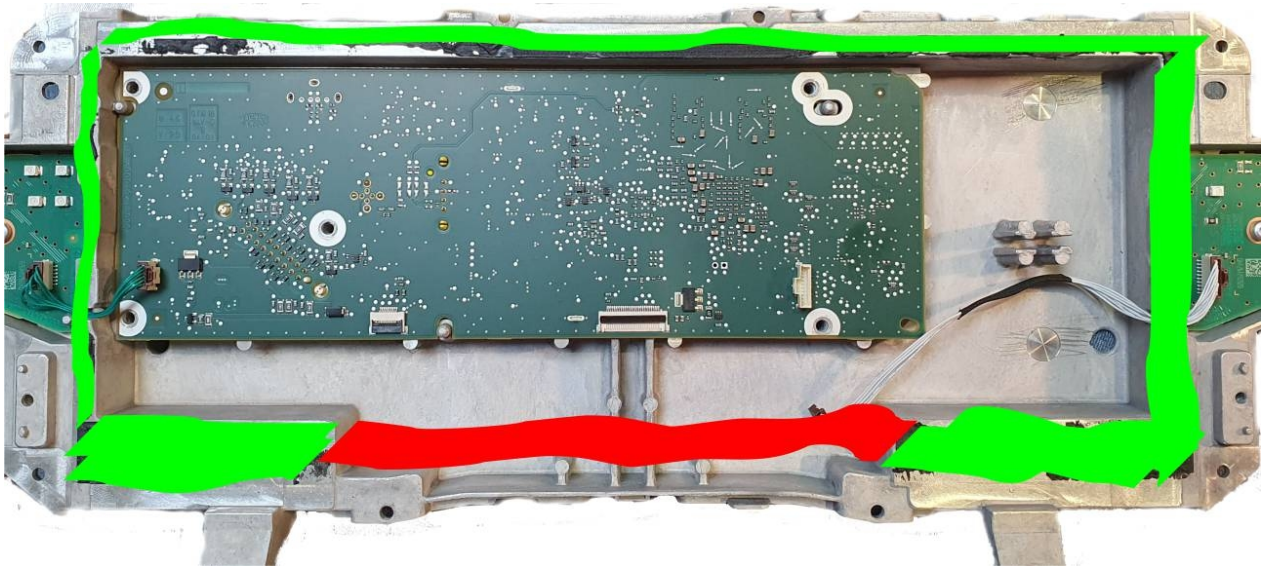
Picture 2 - Label we have to find MM-CMB-DNX - it is mean that is this dash



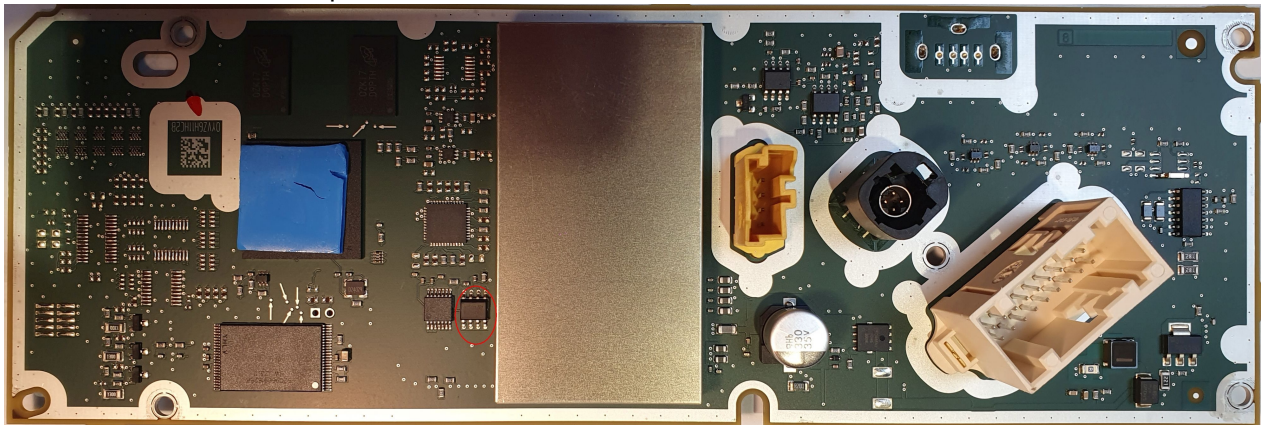
Picture 3 - Back look on dashboard



Picture 4 - marked place where is glue



Picture 5 - marked 95160 eeprom



Picture 4 - dumptool

